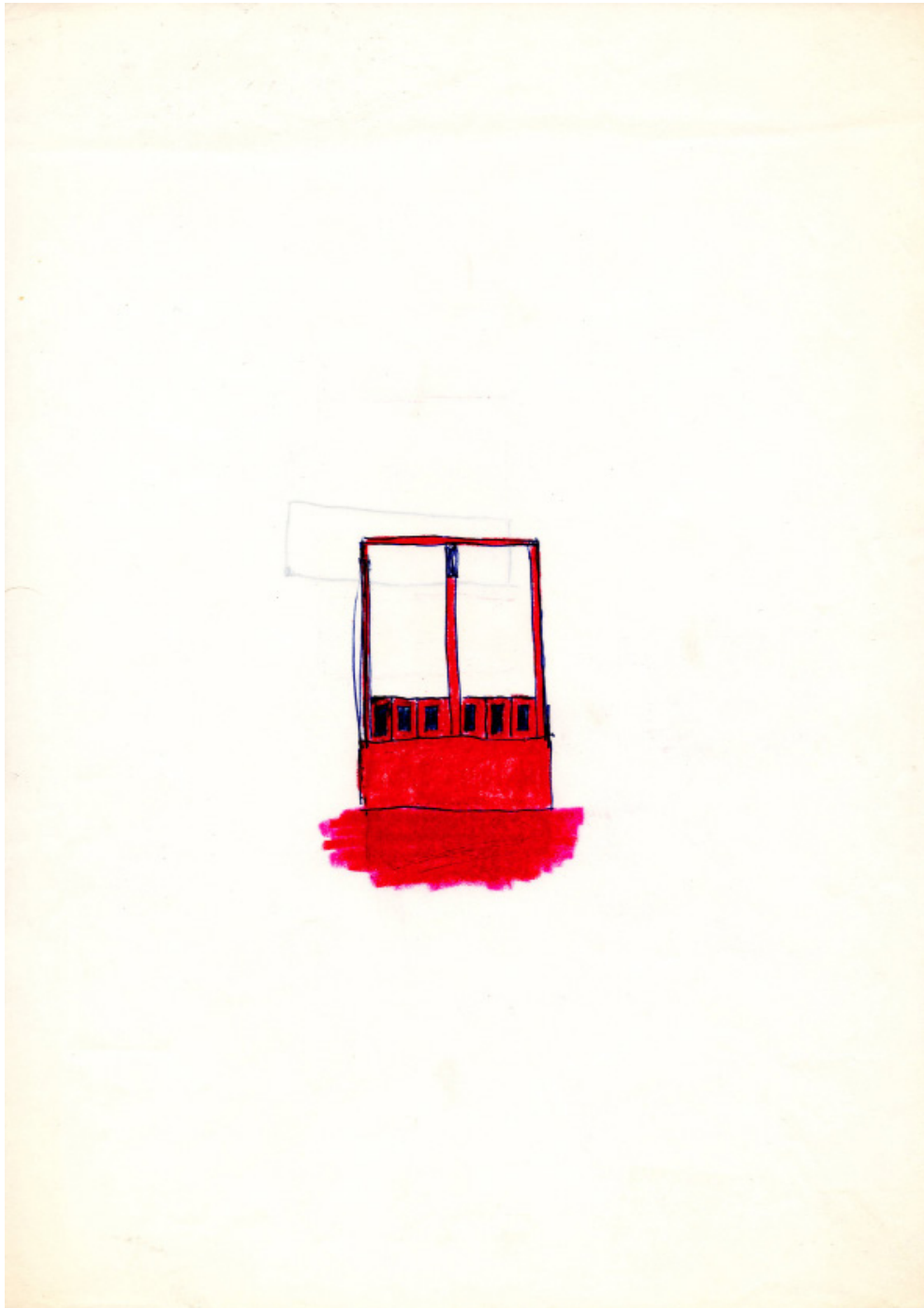

PETER MÄRKLI

16 MAY - 15 JUNE 2014

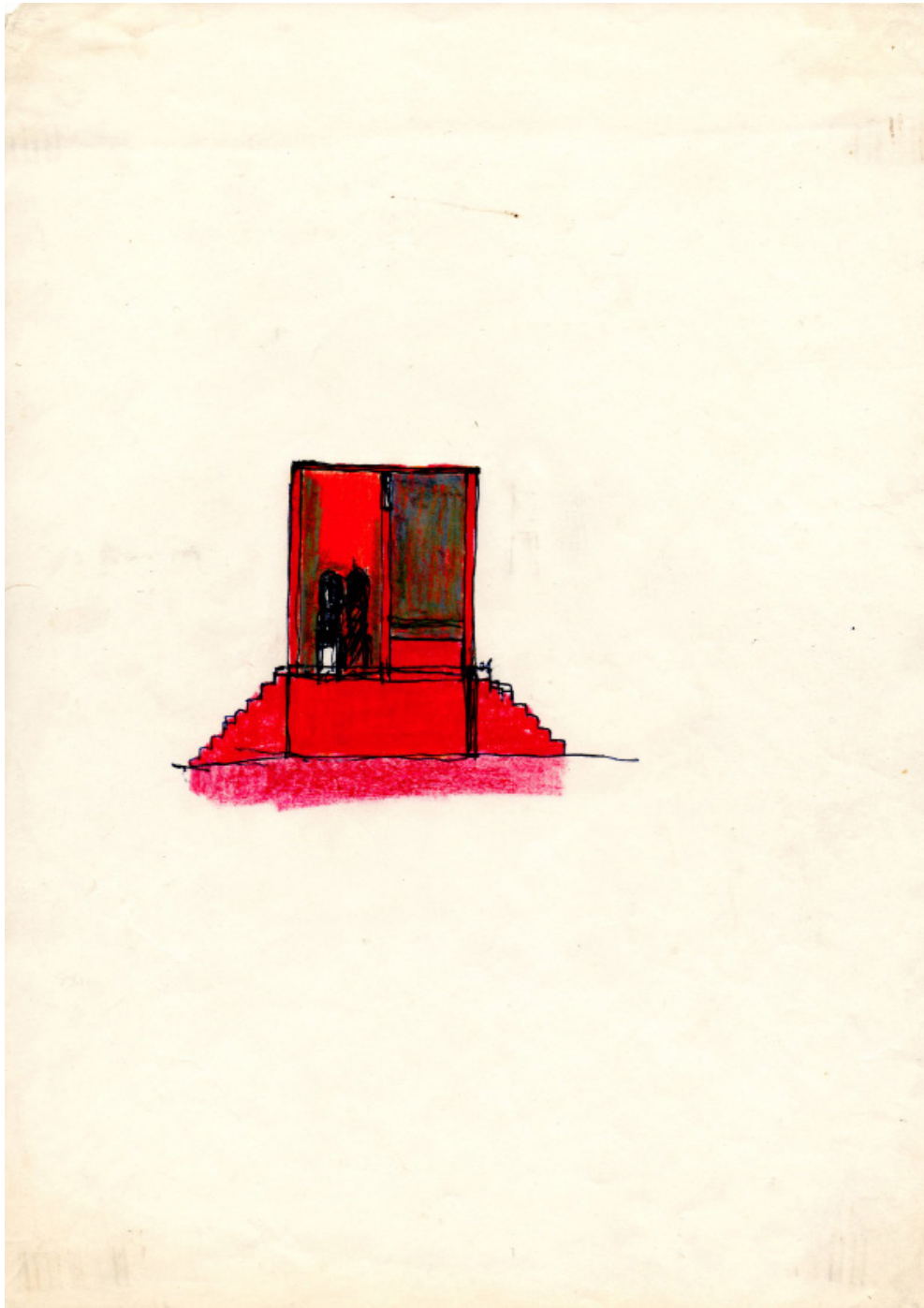
BETTS PROJECT
architecture gallery



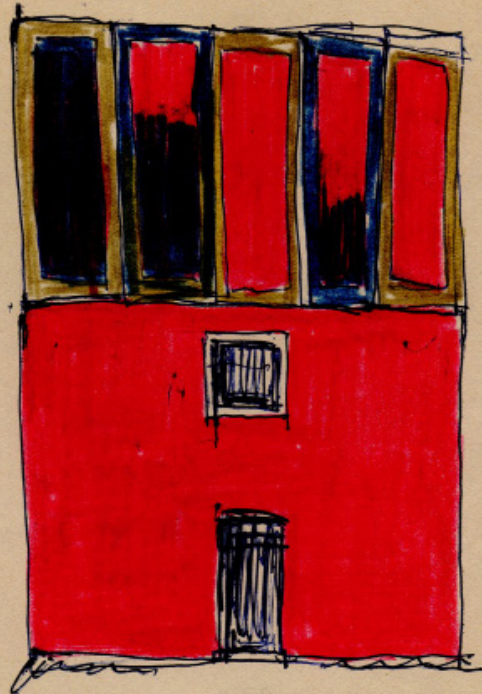
1001
1980-1999
Pastel, pen and tape on paper
21 x 24,4 cm



1002
1980-1999
Pastel and pen on paper
21 x 29,7 cm



1003
1980-1999
Pastel and pen on paper
21 x 29,7 cm



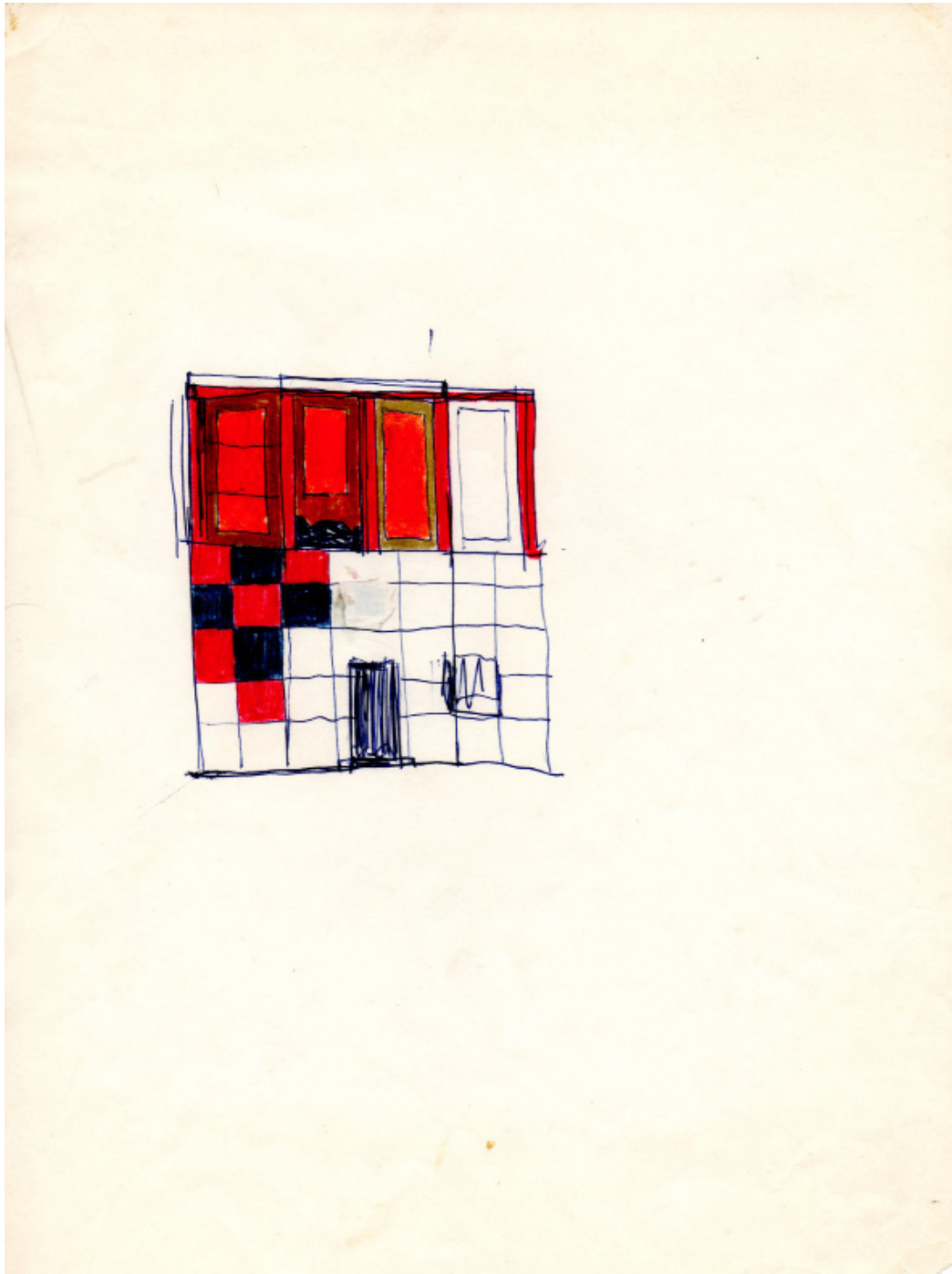
1004
1980-1999
Pastel and pen on paper
21 x 19,7 cm



1005
1980-1999
Pastel and pen on paper
21 x 19,7 cm



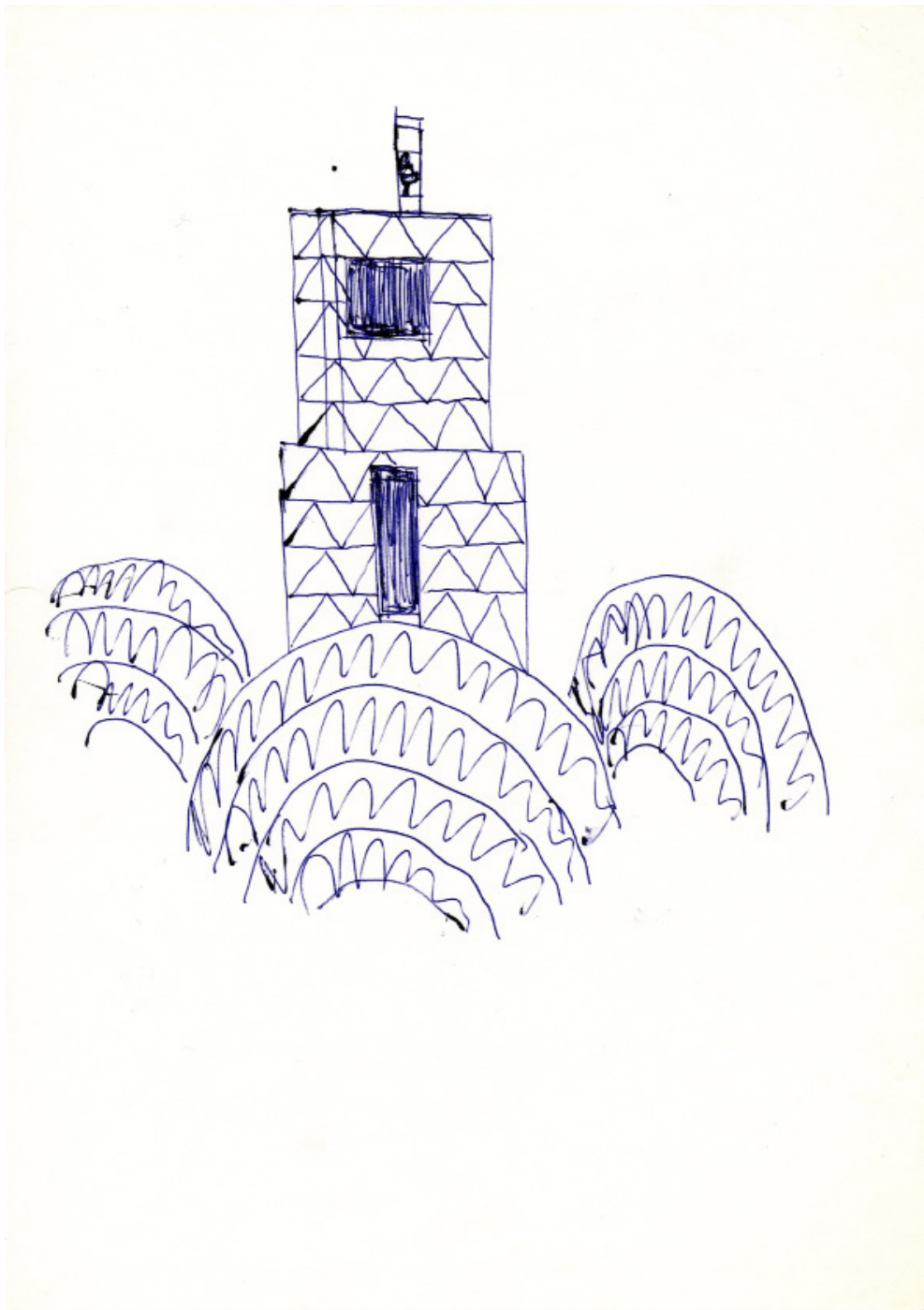
1006
1980-1999
Pastel and pen on paper
21 x 19,7 cm



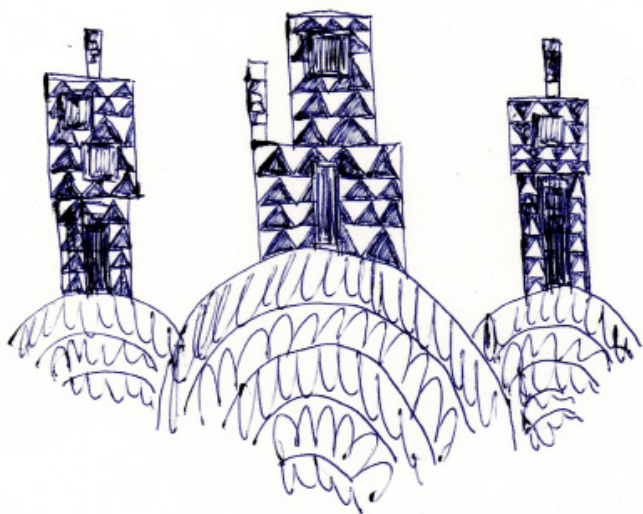
1007
1980-1999
Pastel and pen on paper
21 x 19,7 cm



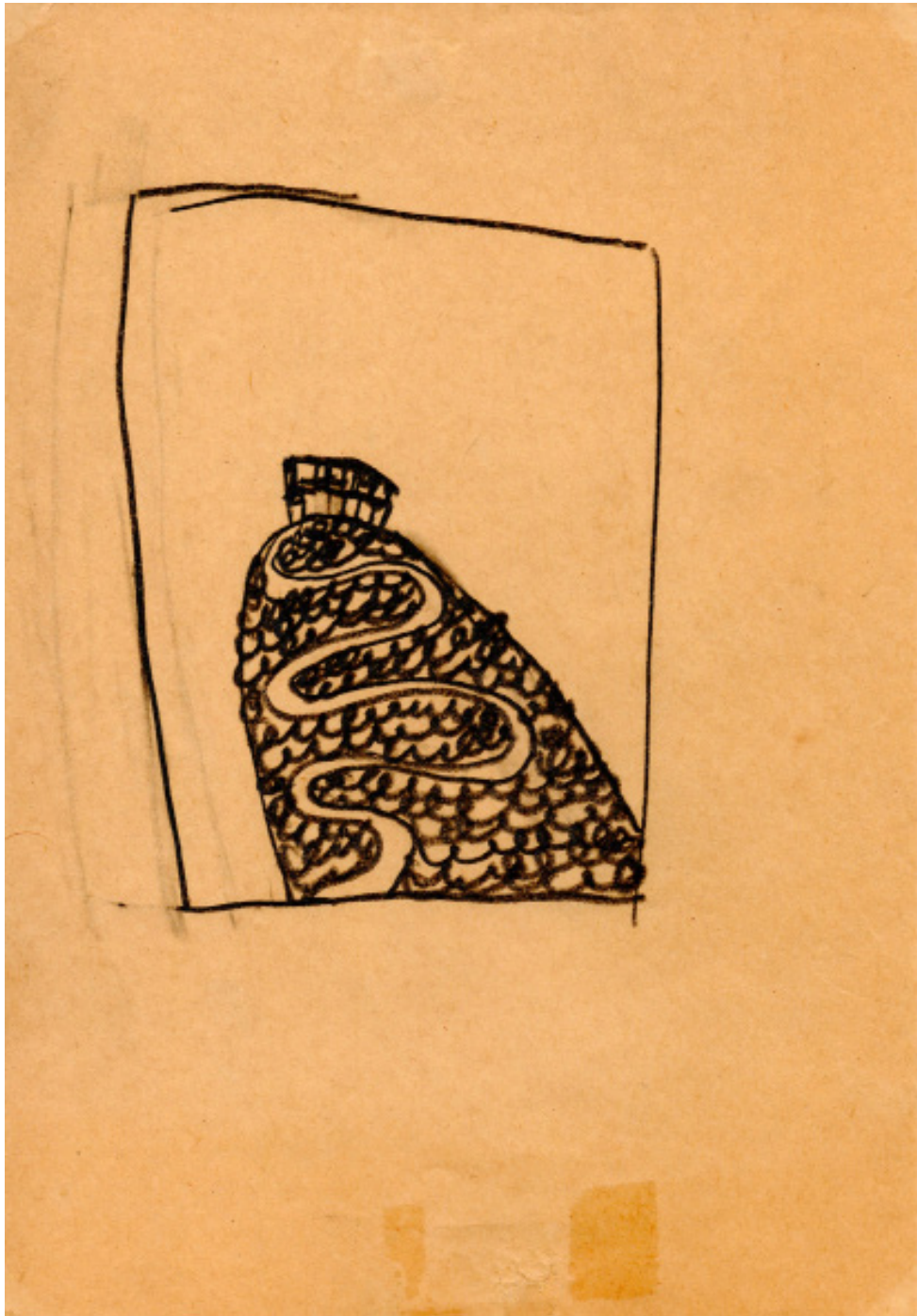
1037
1980-1999
Pastel and pen on paper
21 x 25,5 cm



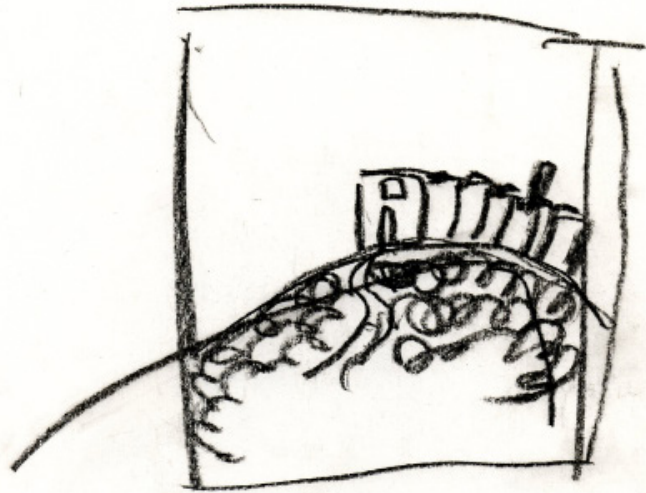
1041
1980-1999
Pen on paper
21 x 29,7 cm



1042
1980-1999
Pen on paper
21 x 29,7 cm



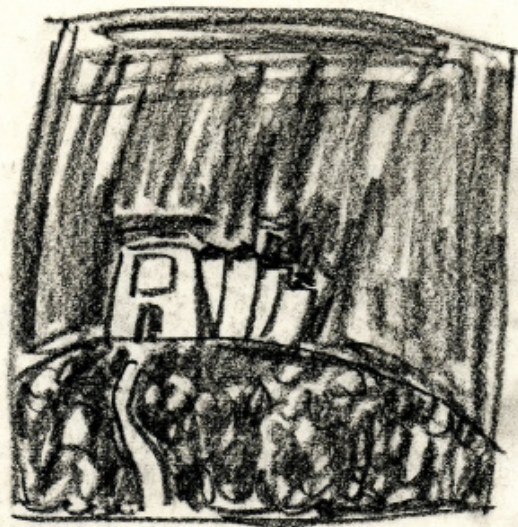
1049
1980-1999
Pencil on paper
14,7 x 21 cm



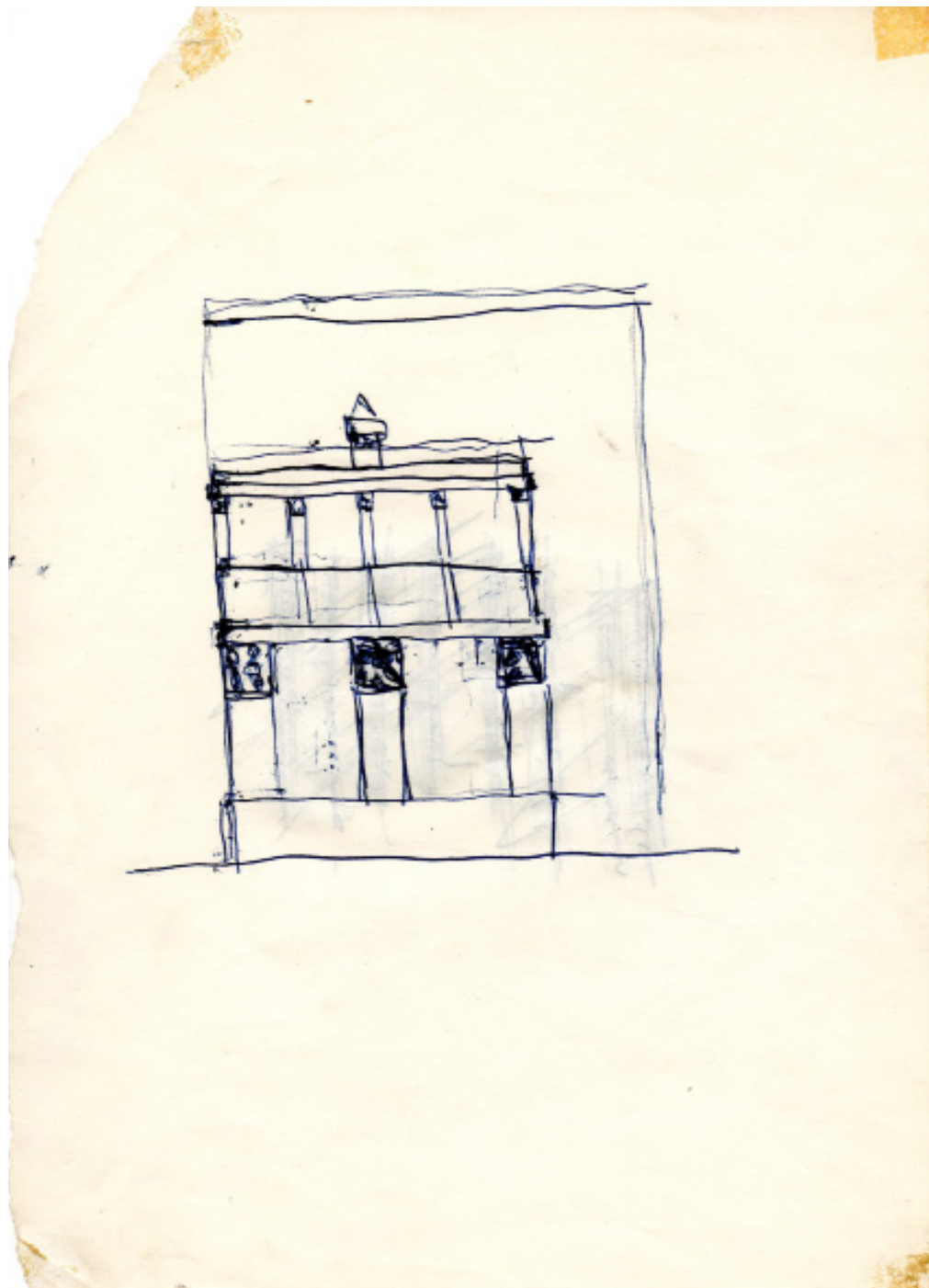
1050
1980-1999
Pencil on paper
21 x 29,7 cm



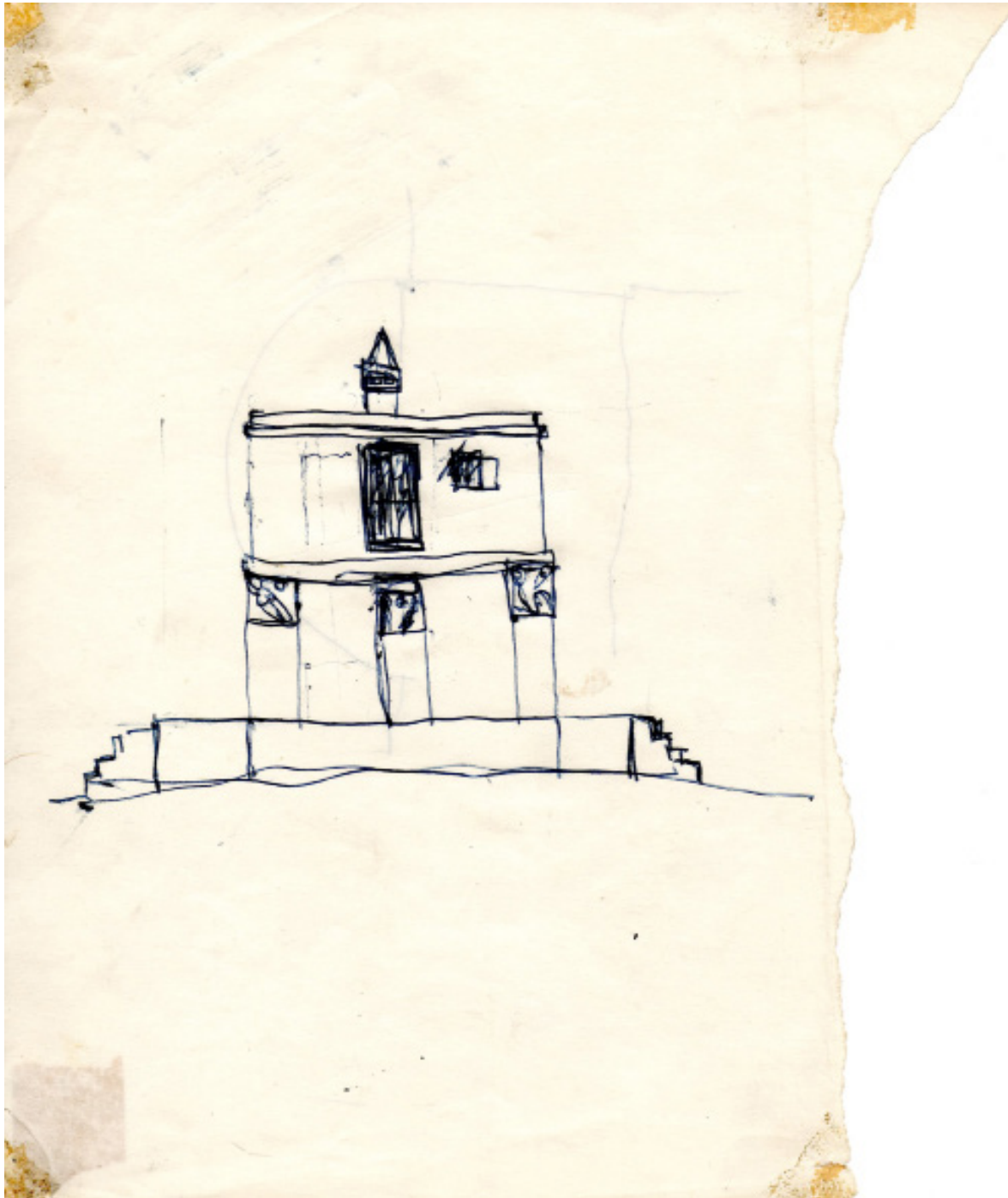
1051
1980-1999
Pastel on paper
21 x 29,7 cm



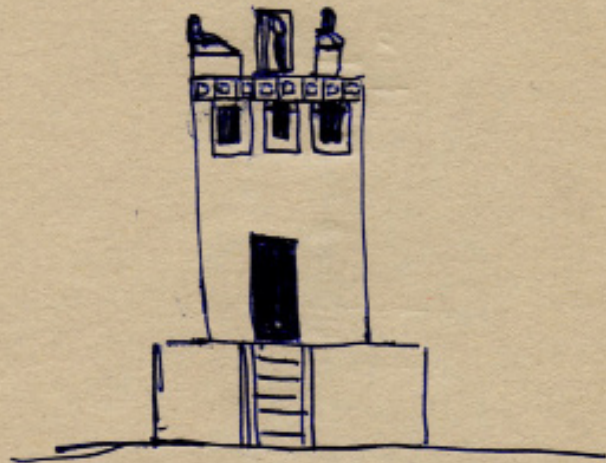
1053
1980-1999
Pastel on paper
21 x 29,7 cm



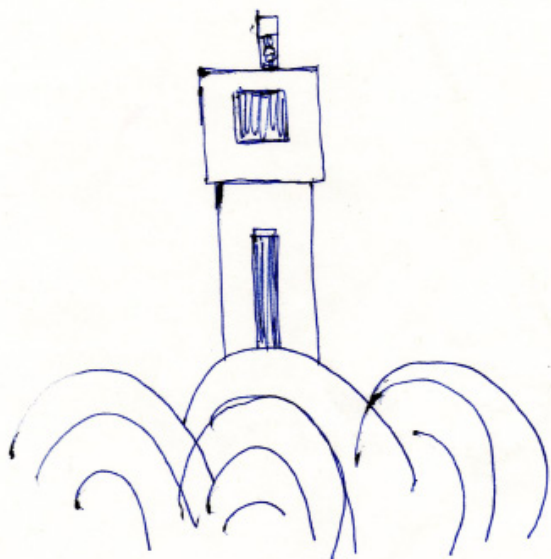
1062
1980-1999
Pen on paper
15,2 x 21 cm



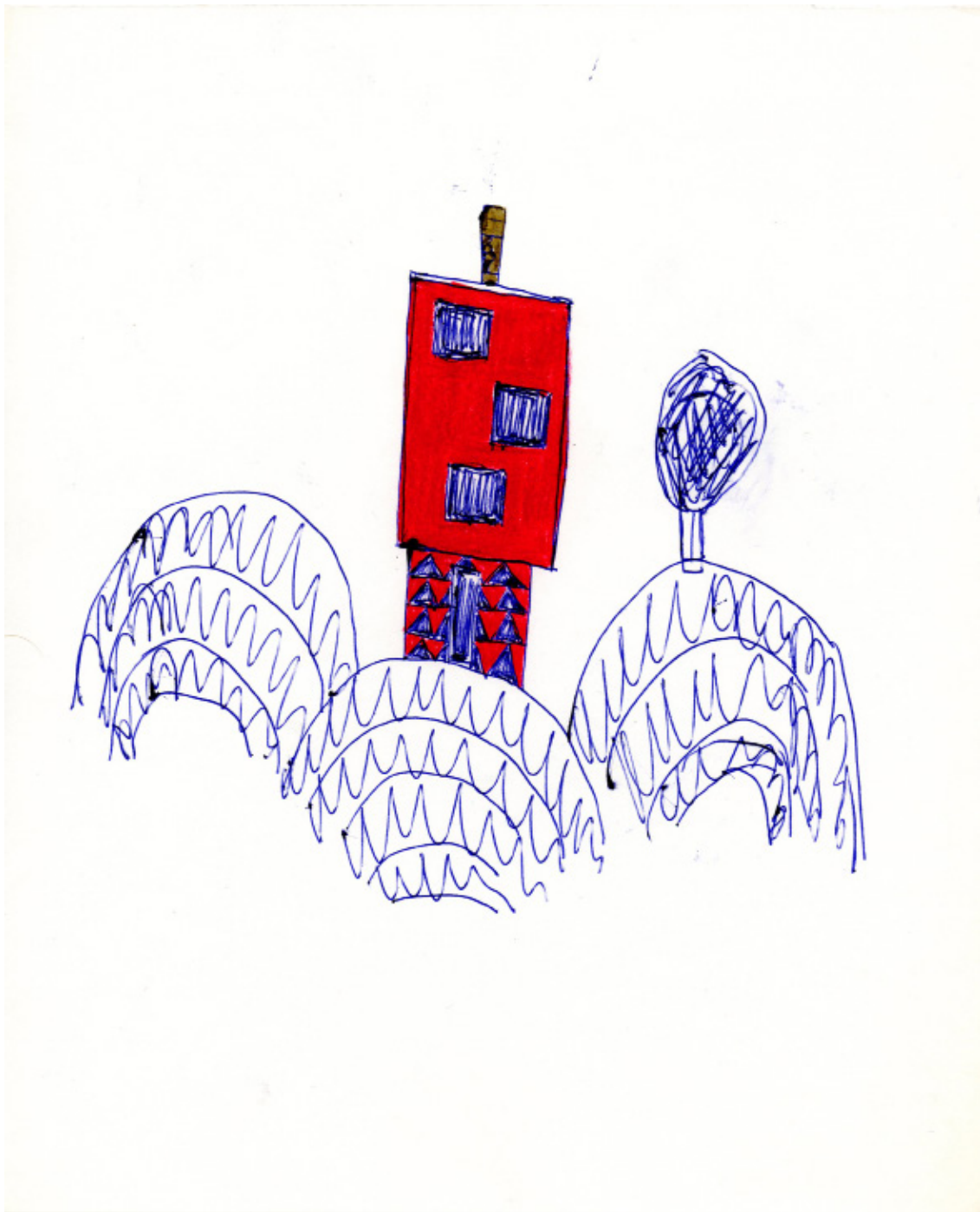
1063
1980-1999
Pen on paper
17,8 x 21 cm



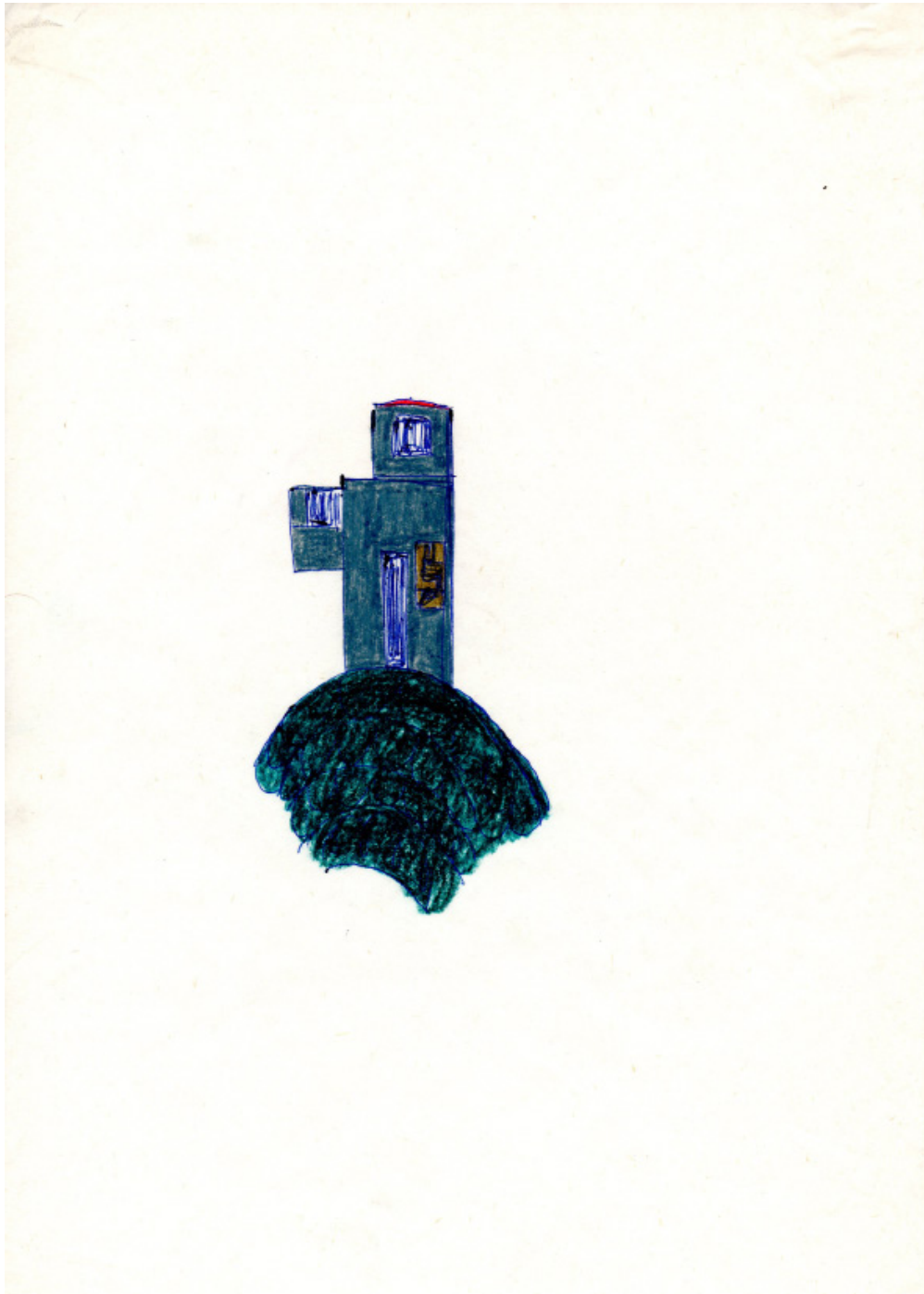
1064
1980-1999
Pen on paper
14,8 x 21 cm



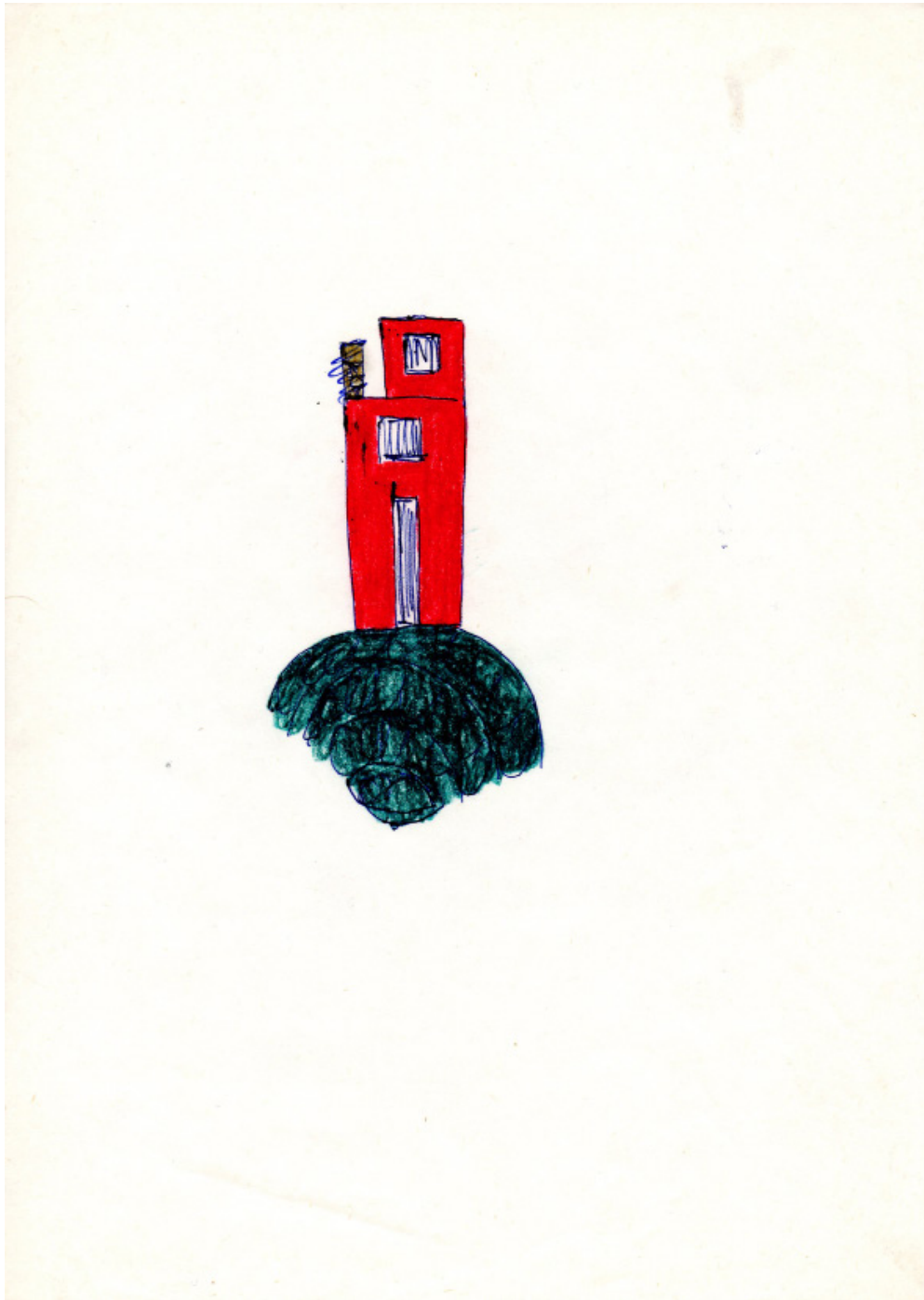
1091
1980-1999
Pen on paper
21 x 29,7 cm



1092
1980-1999
Pastel and pen on paper
21 x 25,7 cm



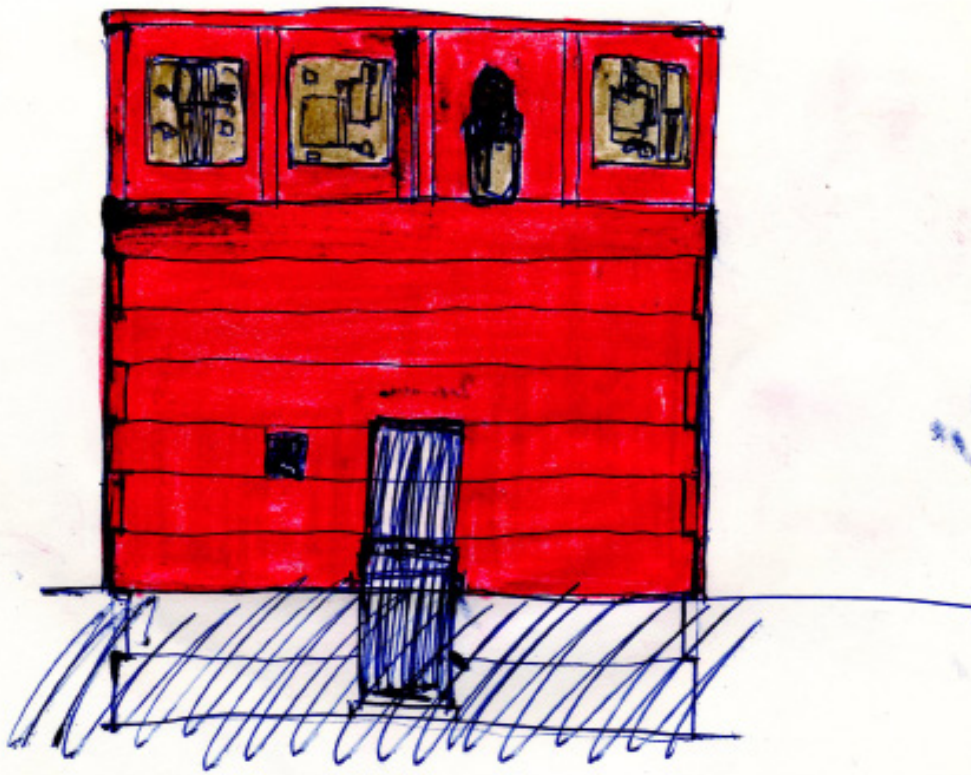
1098
1980-1999
Pastel and pen on paper
21 x 29,7 cm



1100
1980-1999
Pastel and pen on paper
21 x 29,7 cm

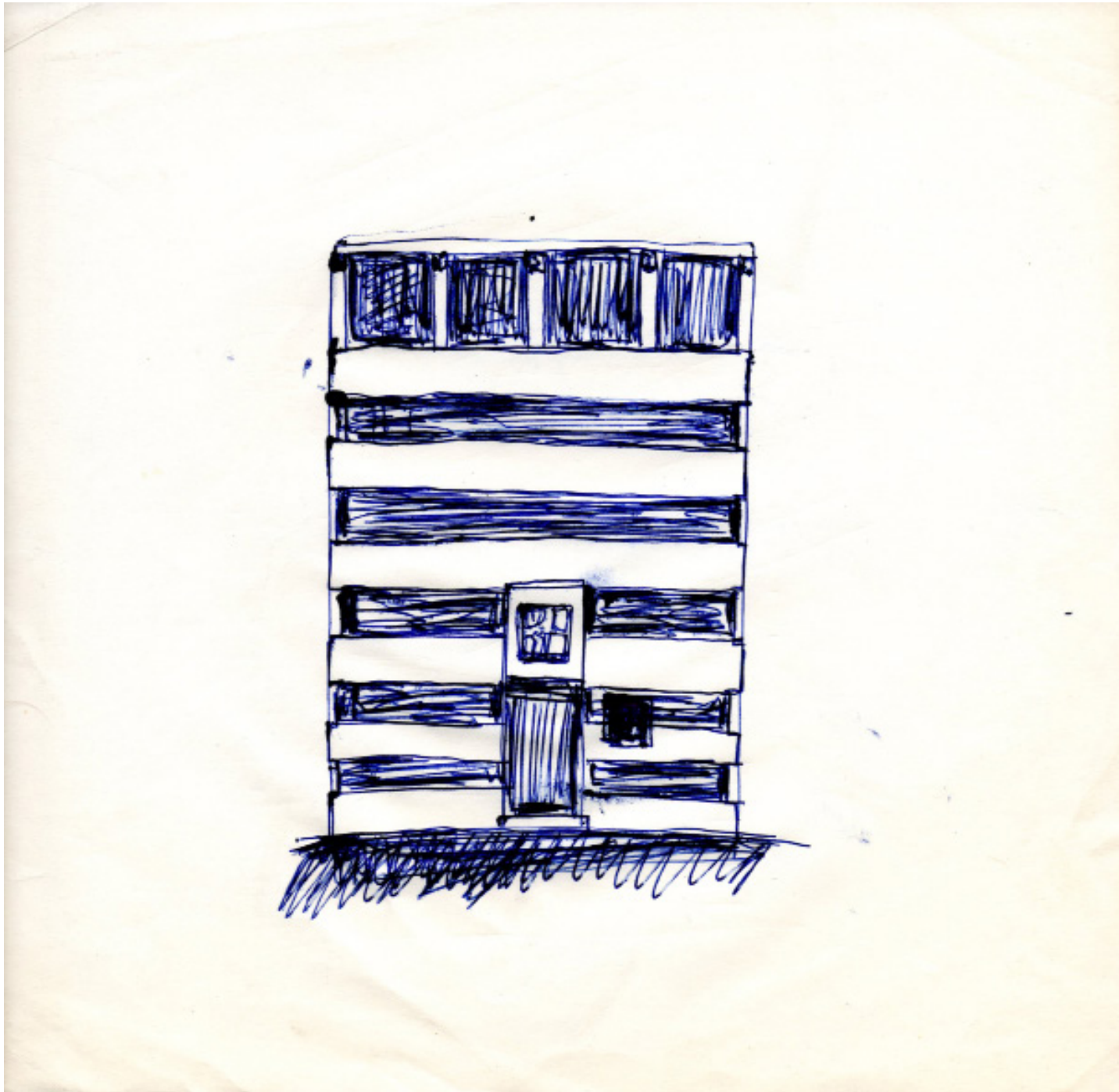


1101
1980-1999
Pastel and pen on paper
21 x 29,7 cm



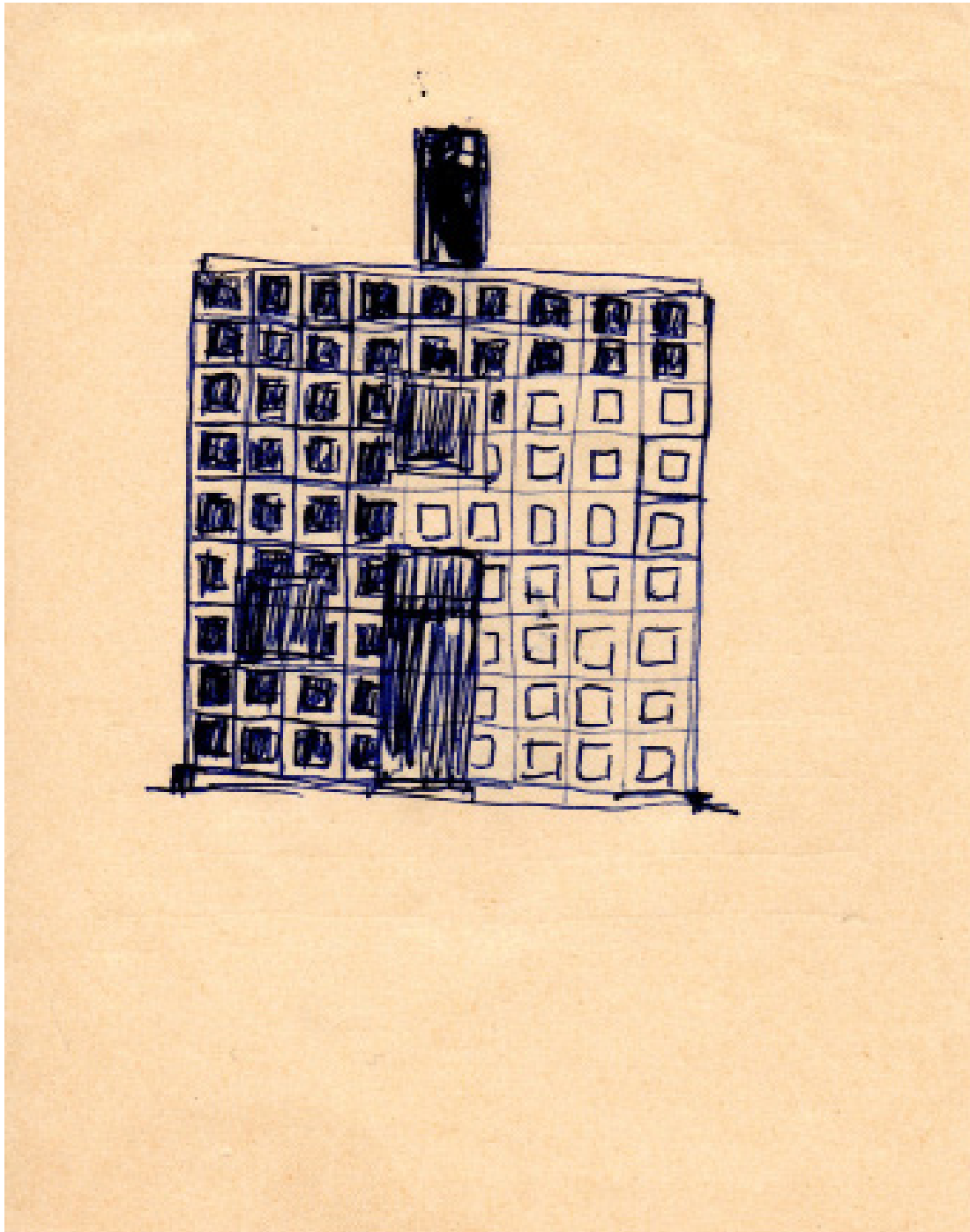
1115
1980-1999
Pastel and pen on paper
22 x 21 cm



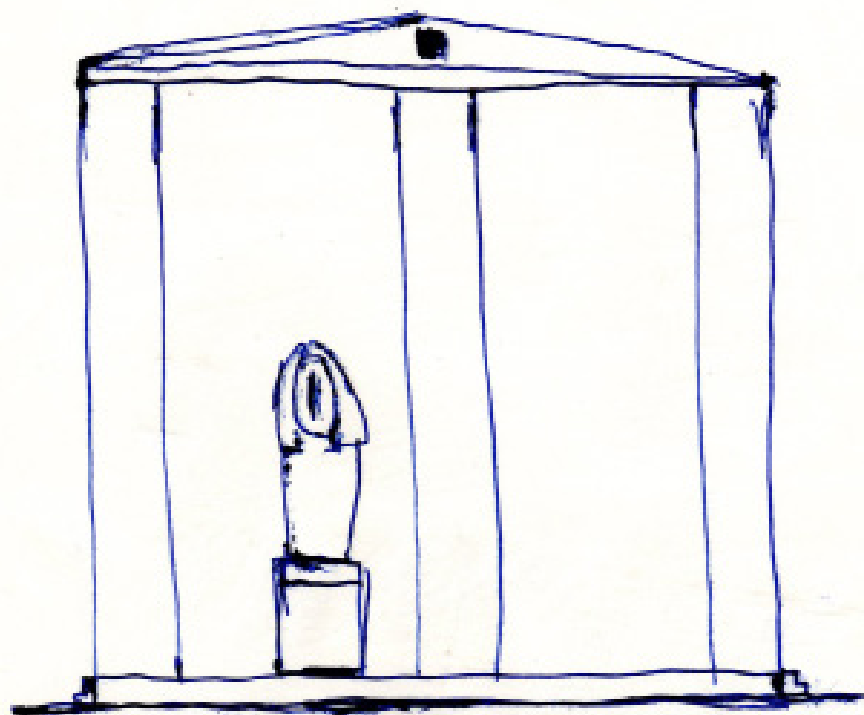


Above:
1117
1980-1999
Pen on paper
29,7 x 21 cm

1120
1980-1999
Pen on paper
22,5 x 21 cm



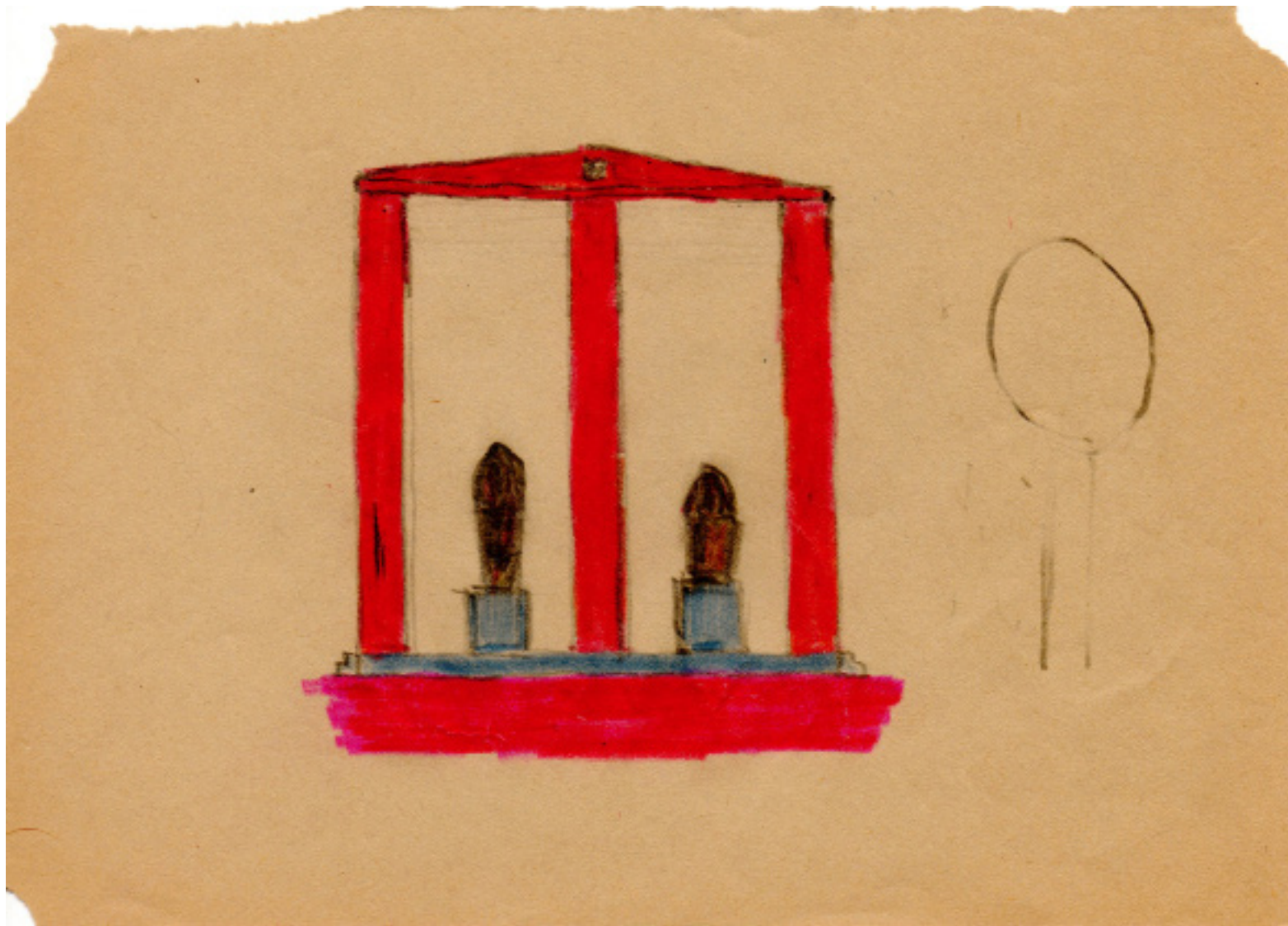
1121
1980-1999
Pen on paper
12,2 x 15,4 cm



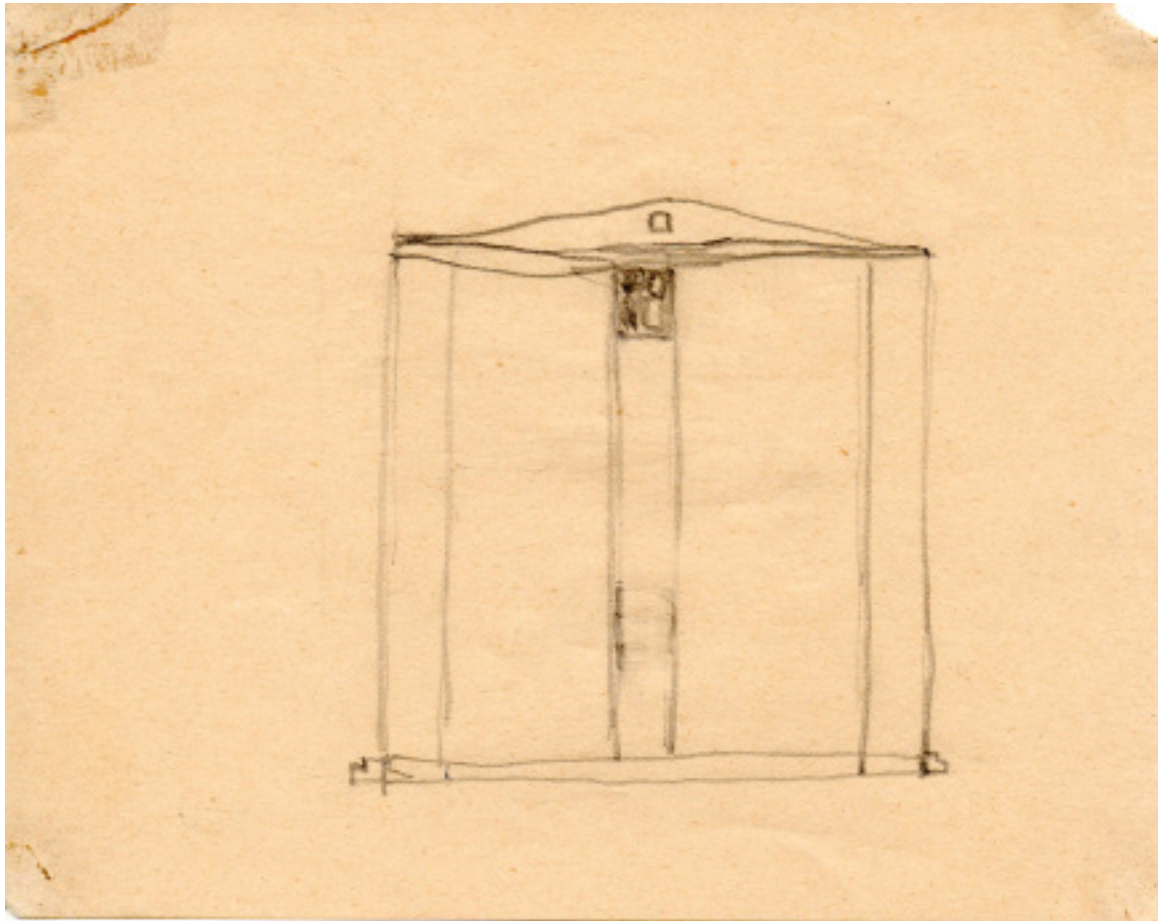
1159
1980-1999
Pen on paper
21 x 17,2 cm



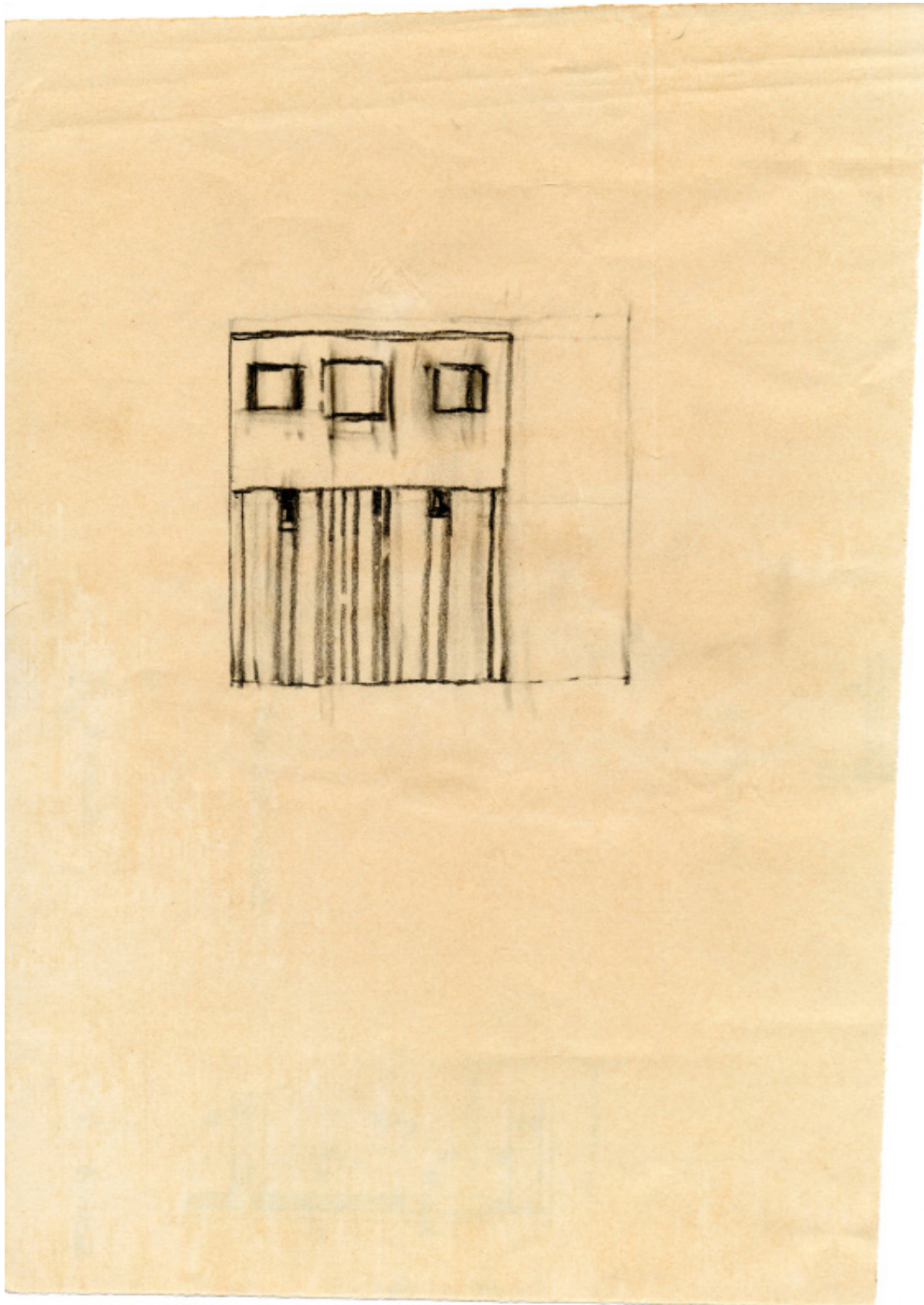
1160
1980-1999
Pen and tape on paper
21 x 15 cm



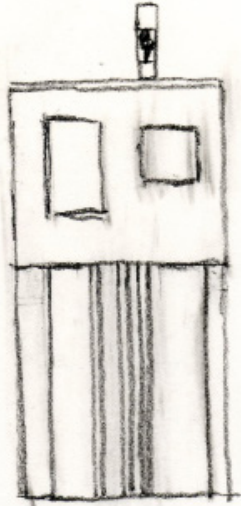
1161
1980-1999
Pastel and pen on paper
21 x 15 cm



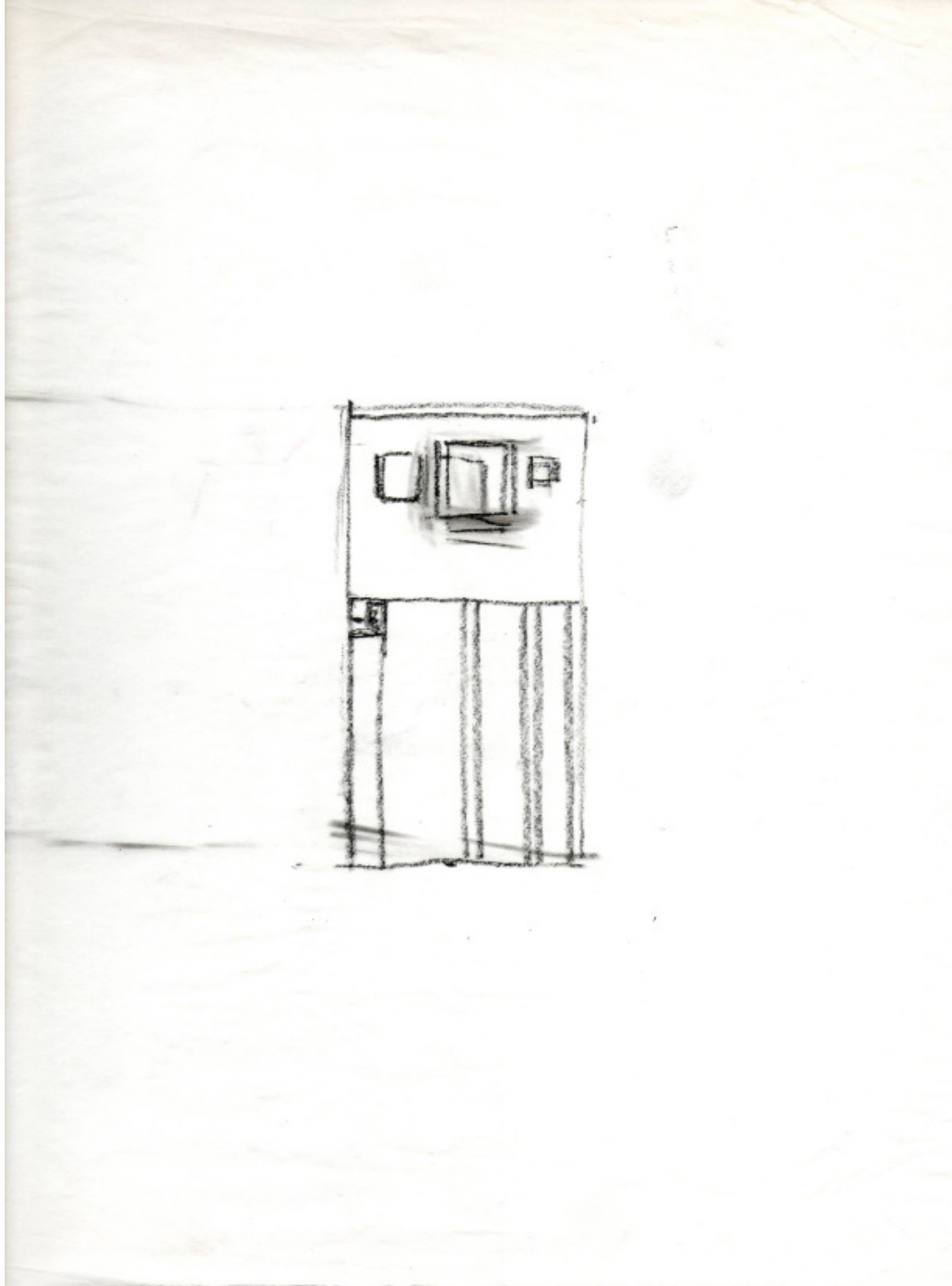
1162
1980-1999
Pencil on paper
15,5 x 12,2 cm



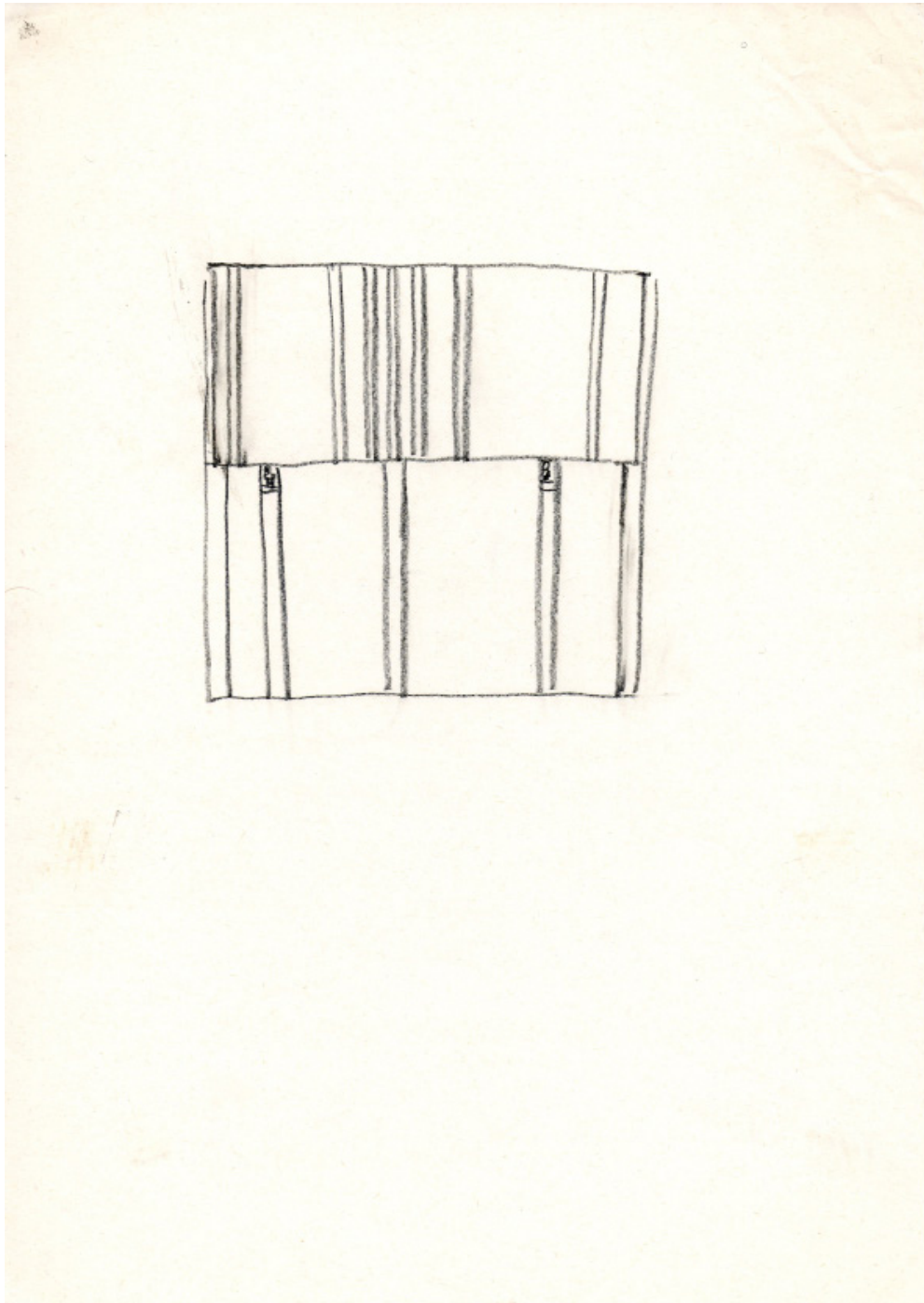
1221
1980-1999
Pastel on paper
20 x 28 cm



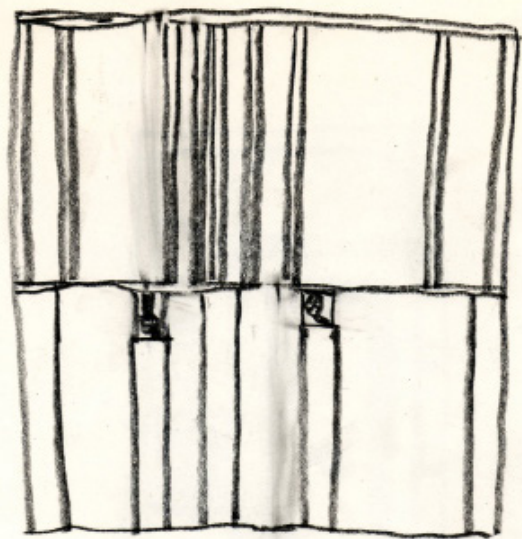
1222
1980-1999
Pastel on paper
21 x 29,7 cm



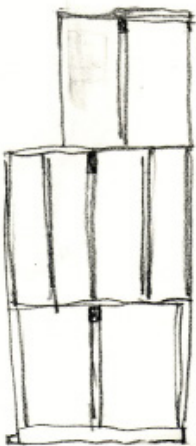
1226
1980-1999
Pastel on tracing paper
24 x 29,3 cm



1242
1980-1999
Pastel on paper
21 x 29,7 cm



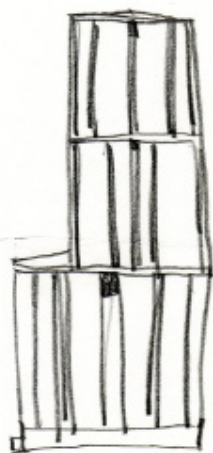
1245
1980-1999
Pastel on paper
21 x 29,7 cm



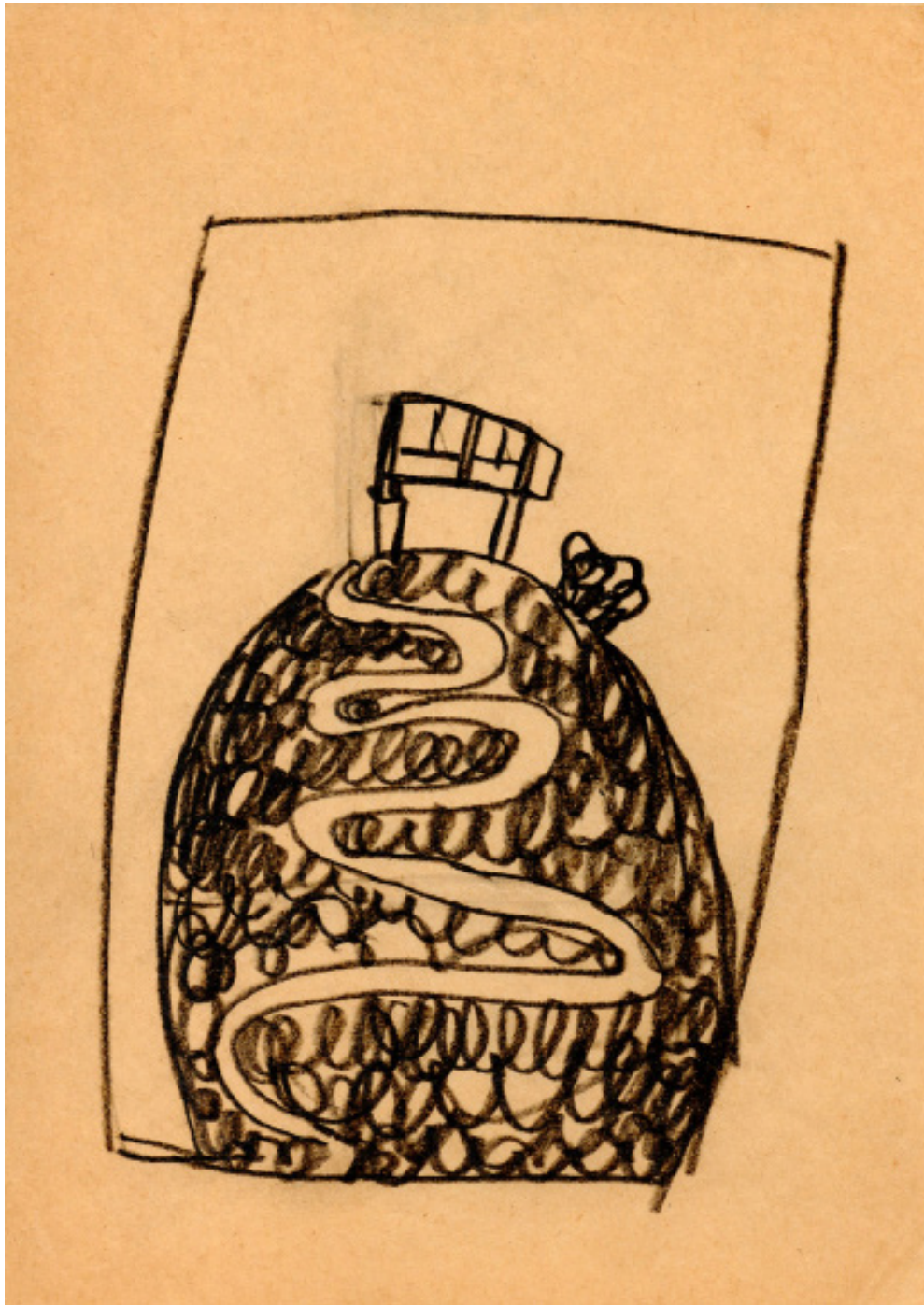
1261
1980-1999
Pencil on paper
21 x 29,7 cm



1262
1980-1999
Pastel on paper
21 x 29,7 cm



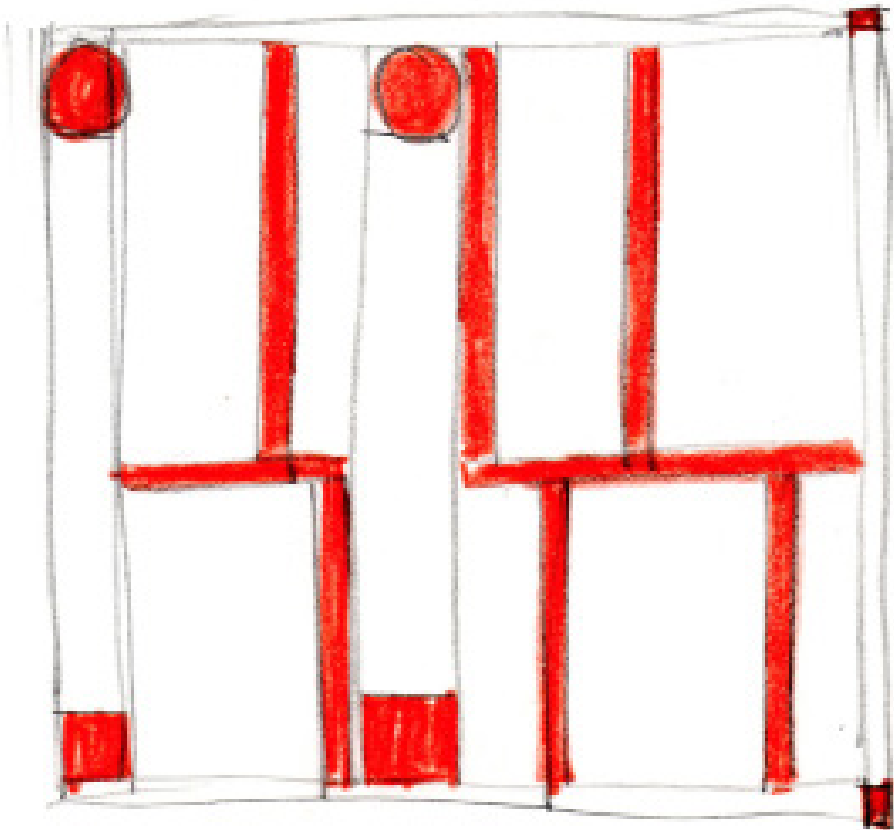
1264
1980-1999
Pastel on paper
21 x 29,7 cm



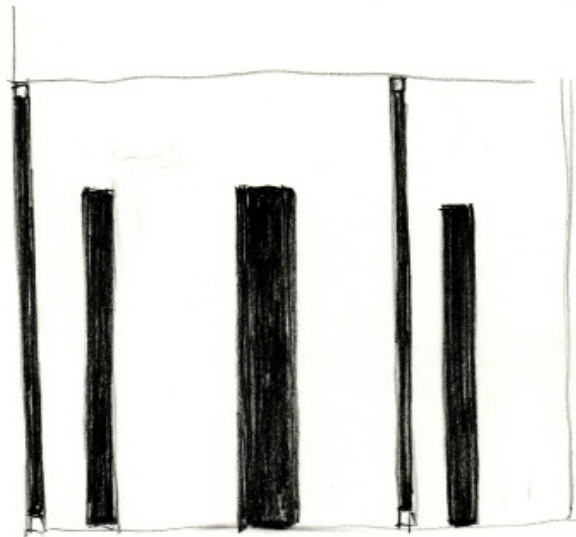
1314
1980-1999
Pastel on paper
14,7 x 20,5 cm



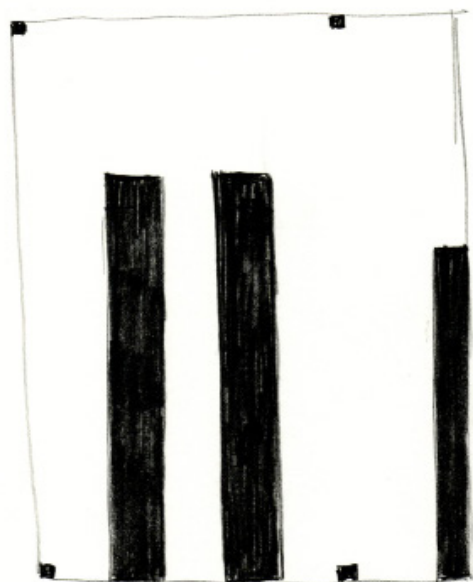
1368
1980-1999
Pastel on paper
21 x 29,7 cm



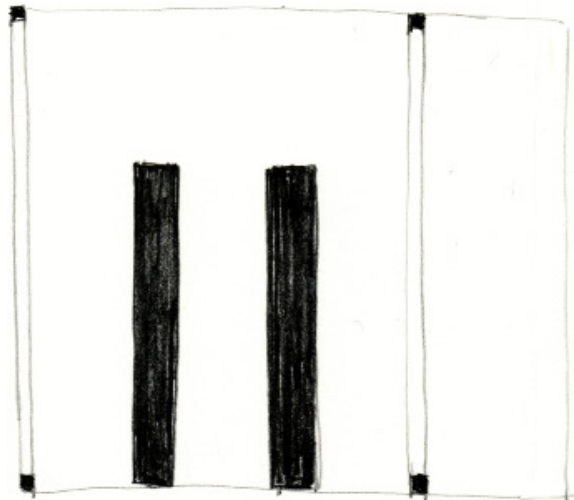
2001
2000-2013
Pastel on paper
10,5 x 14,7 cm



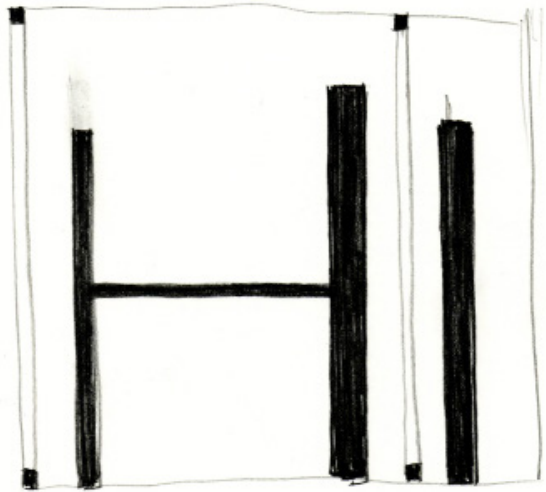
2023
2000-2013
Pastel on paper
21 x 29,7 cm



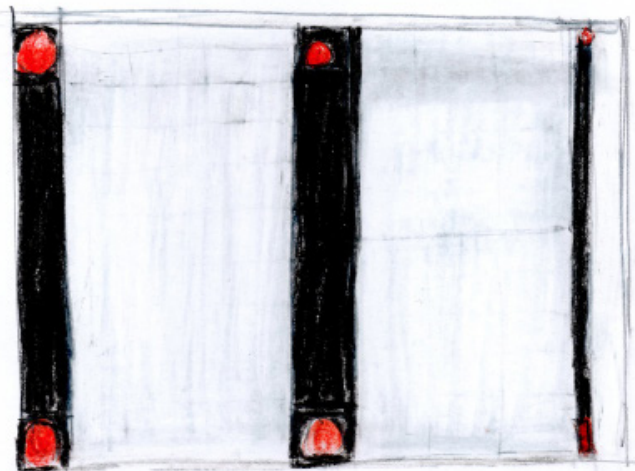
2024
2000-2013
Pastel on paper
21 x 29,7 cm



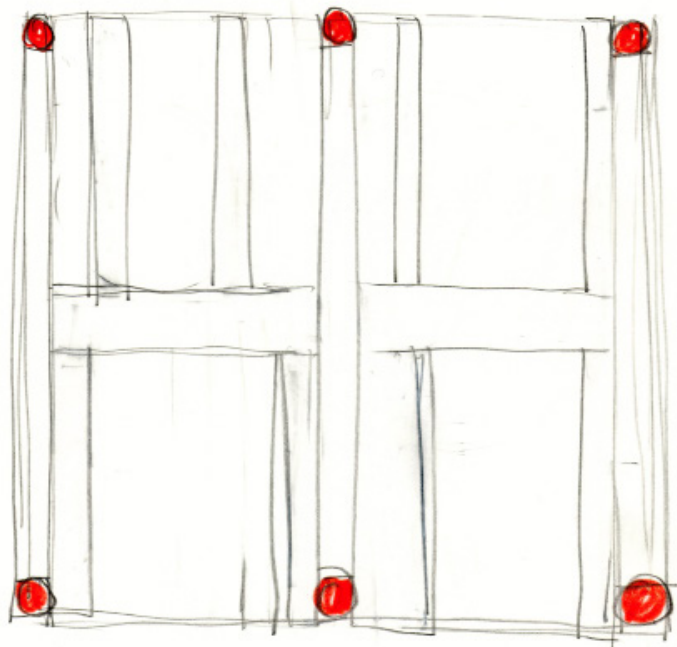
2025
2000-2013
Pastel on paper
21 x 29,7 cm



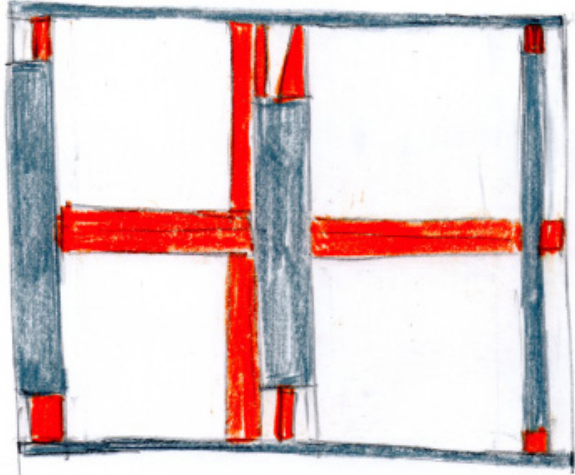
2026
2000-2013
Pastel on paper
21 x 29,7 cm



2027
2000-2013
Pastel on paper
21 x 29,7 cm



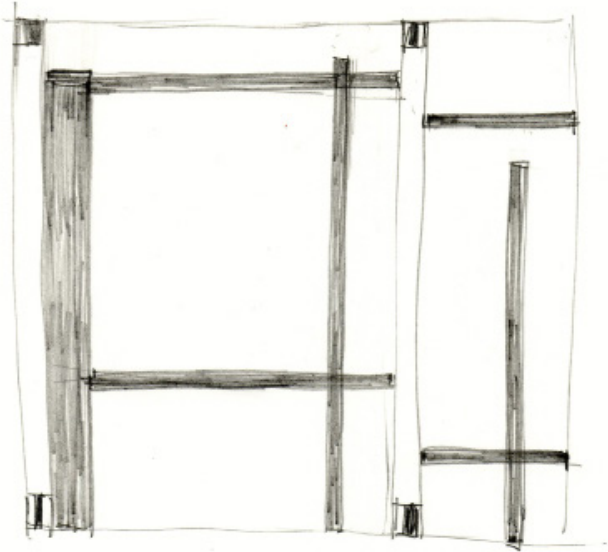
2028
2000-2013
Pastel on paper
21 x 29,7 cm



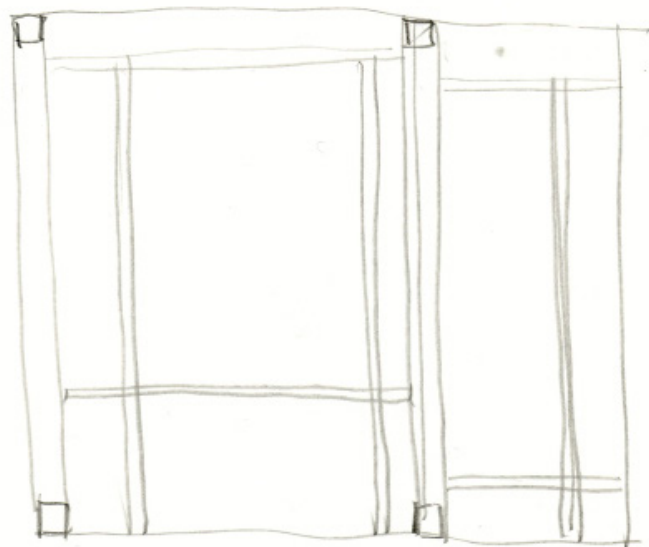
2030
2000-2013
Pastel on paper
21 x 29,7 cm



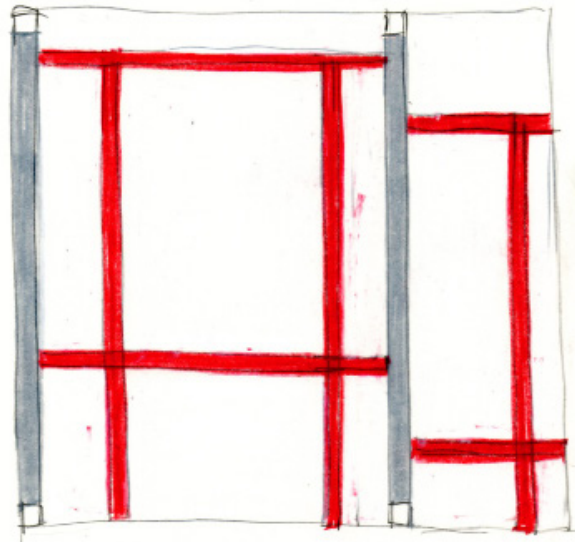
2031
2000-2013
Pastel on paper
21 x 29,7 cm



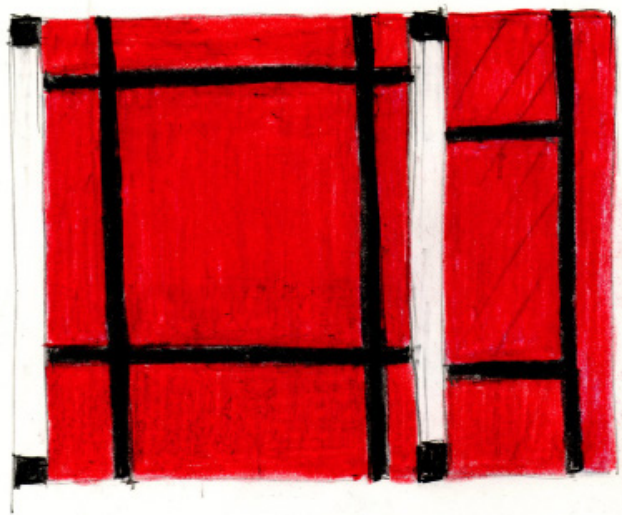
2033
2000-2013
Pastel on paper
21 x 29,7 cm



2034
2000-2013
Pencil on paper
21 x 29,7 cm



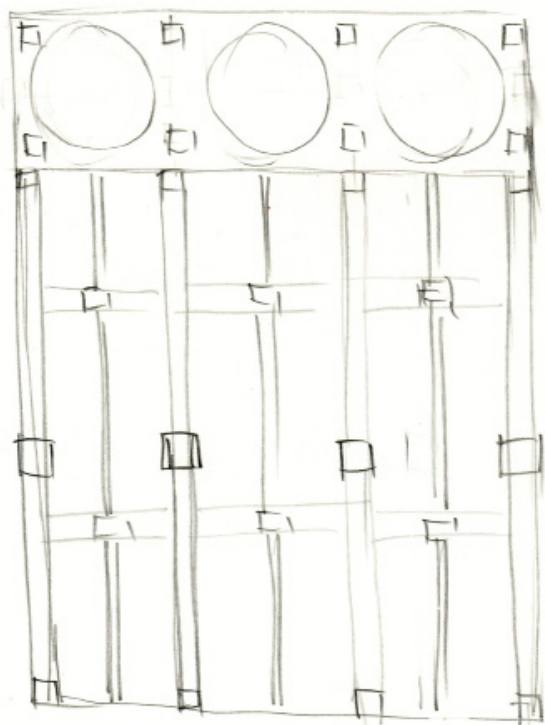
2035
2000-2013
Pastel and pencil on paper
21 x 29,7 cm



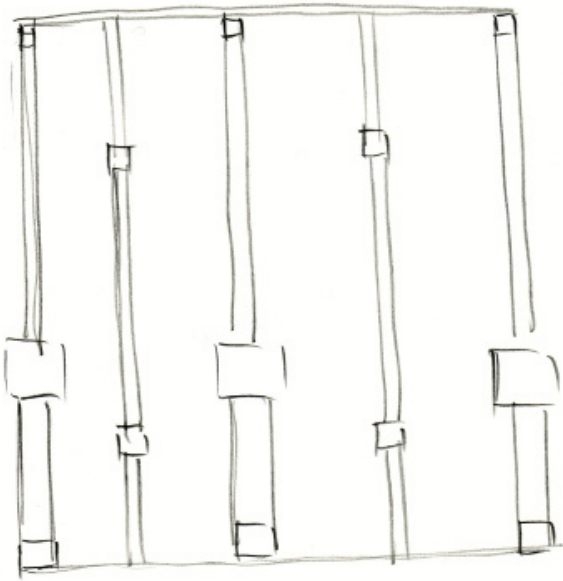
2036
2000-2013
Pastel and pencil on paper
21 x 29,7 cm



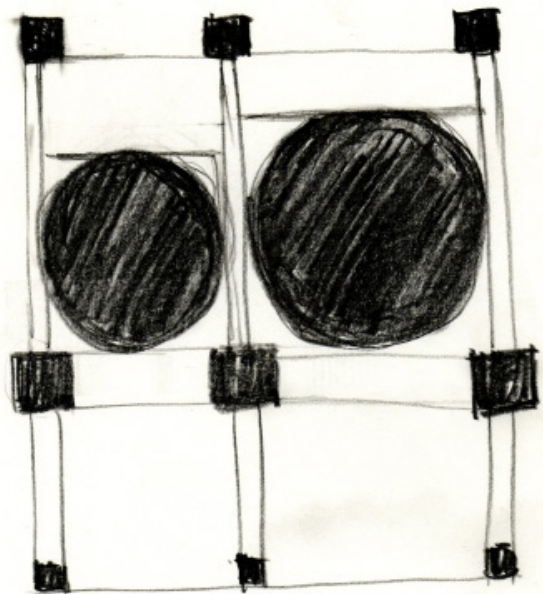
2037
2000-2013
Pastel and pencil on paper
21 x 29,7 cm



2041
2000-2013
Pencil on paper
21 x 29,7 cm

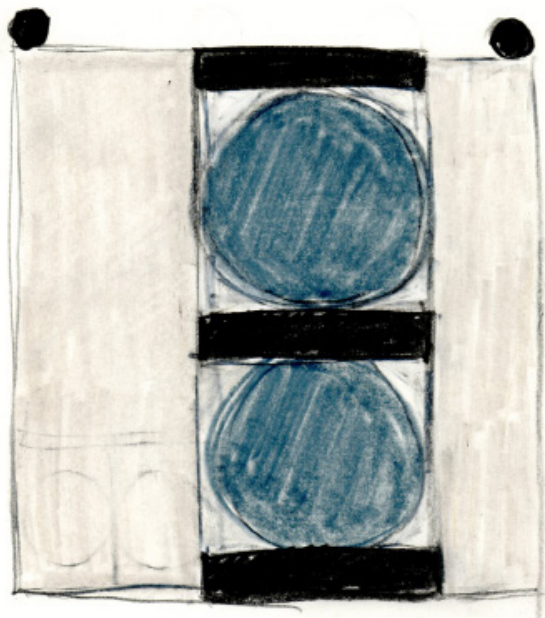


2042
2000-2013
Pencil on paper
21 x 29,7 cm

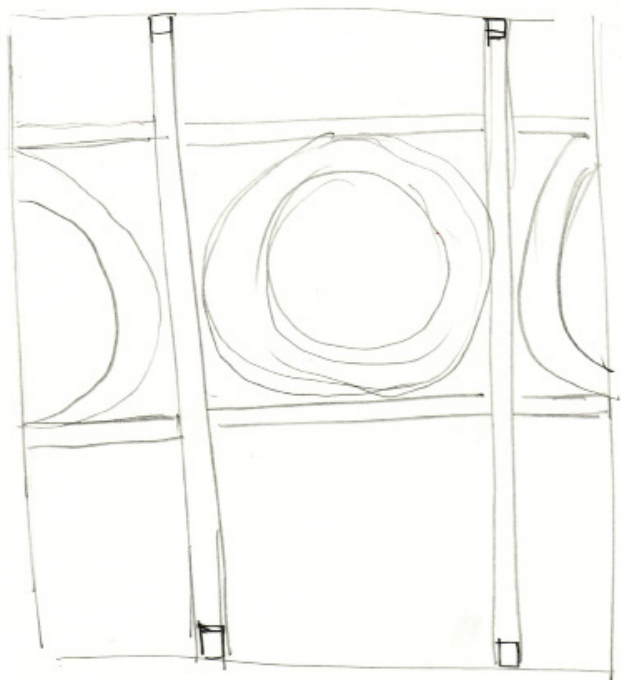


Павел

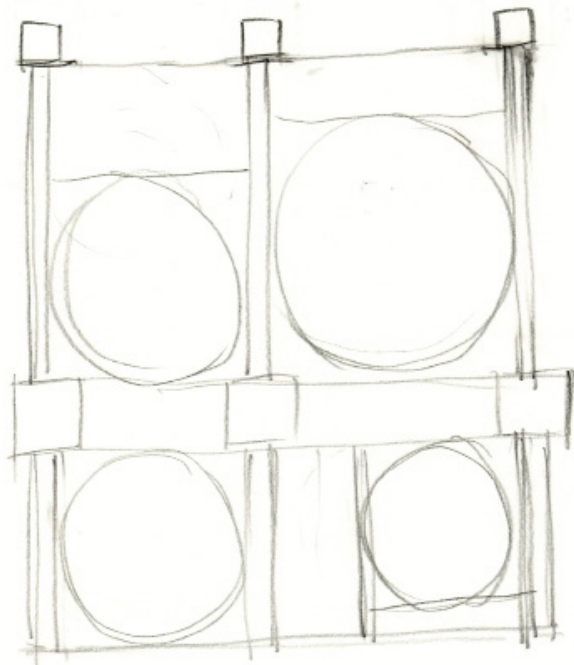
2044
2000-2013
Pastel on paper
21 x 29,7 cm



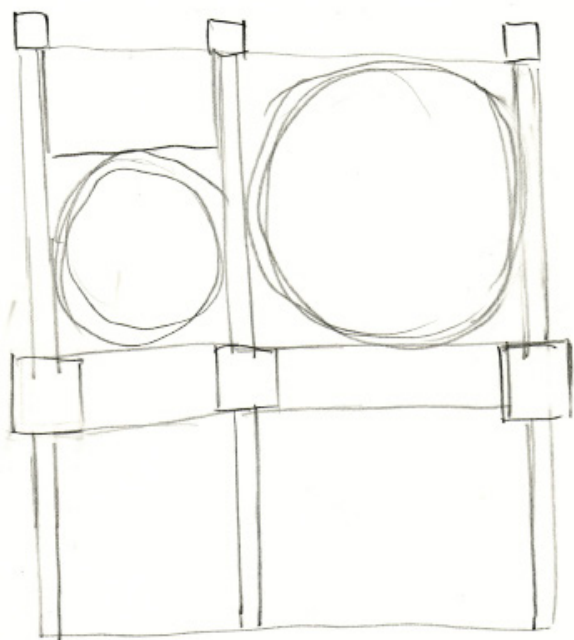
2046
2000-2013
Pastel on paper
21 x 29,7 cm



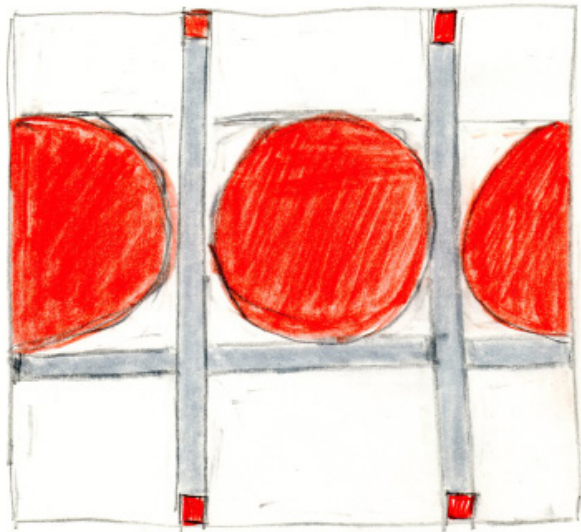
2050
2000-2013
Pencil on paper
21 x 29,7 cm



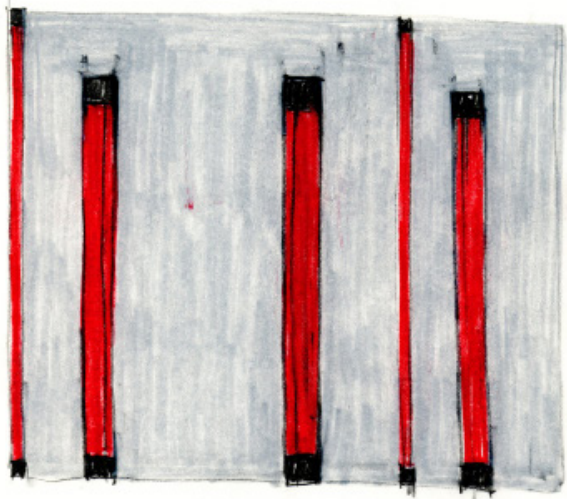
2051
2000-2013
Pencil on paper
21 x 29,7 cm



2055
2000-2013
Pencil on paper
21 x 29,7 cm

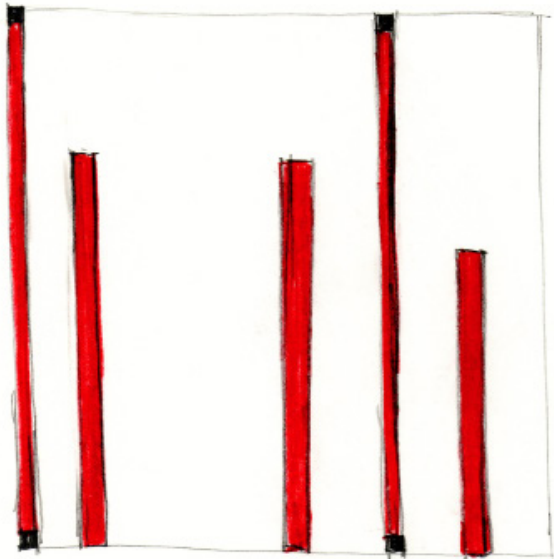


2056
2000-2013
Pastel and pencil on paper
21 x 29,7 cm



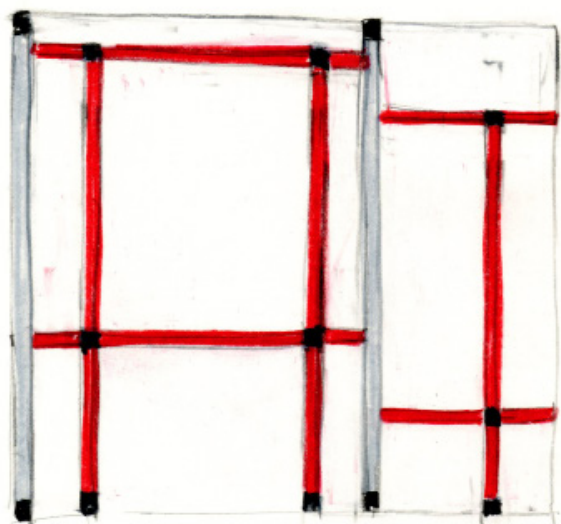
närld'

2105
2000-2013
Pastel on paper
21 x 29,7 cm

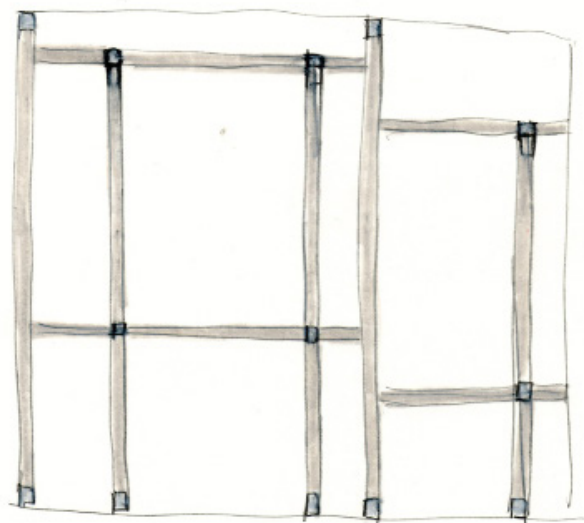


726

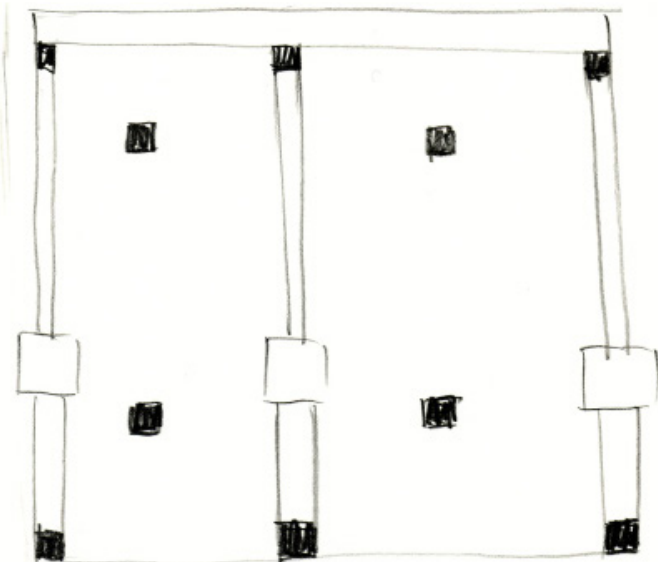
2106
2000-2013
Pastel on paper
21 x 29,7 cm



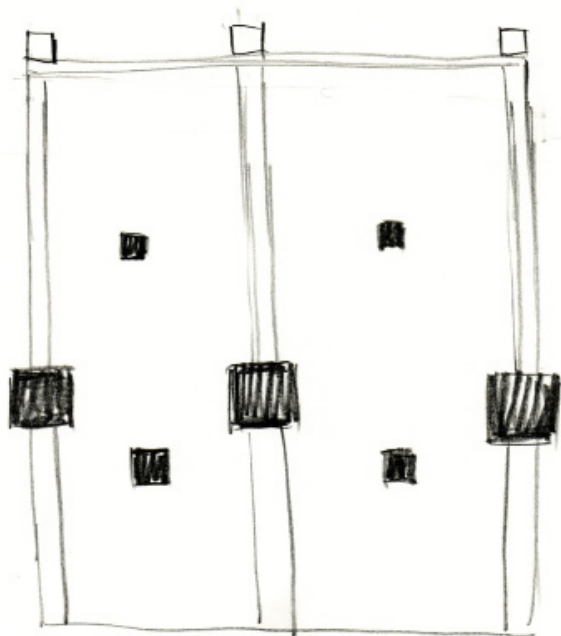
2107
2000-2013
Pastel and pencil on paper
21 x 29,7 cm



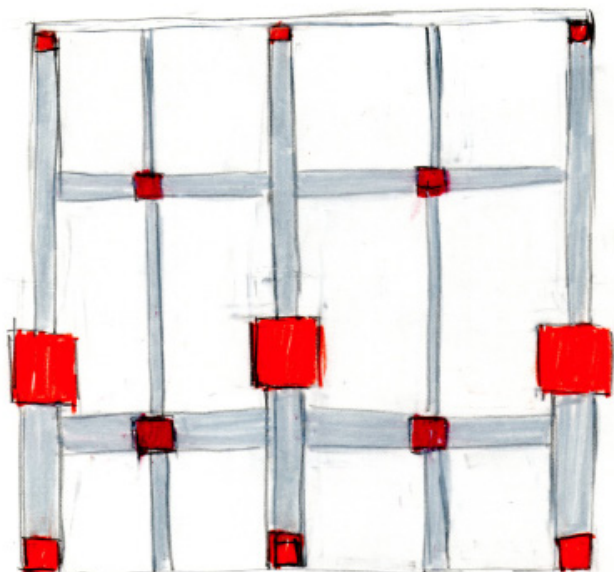
2108
2000-2013
Pastel and pencil on paper
21 x 29,7 cm



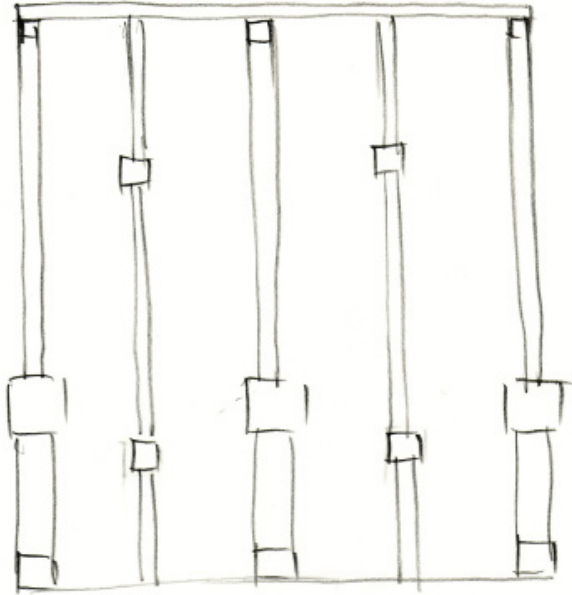
2113
2000-2013
Pastel and pencil on paper
21 x 29,7 cm



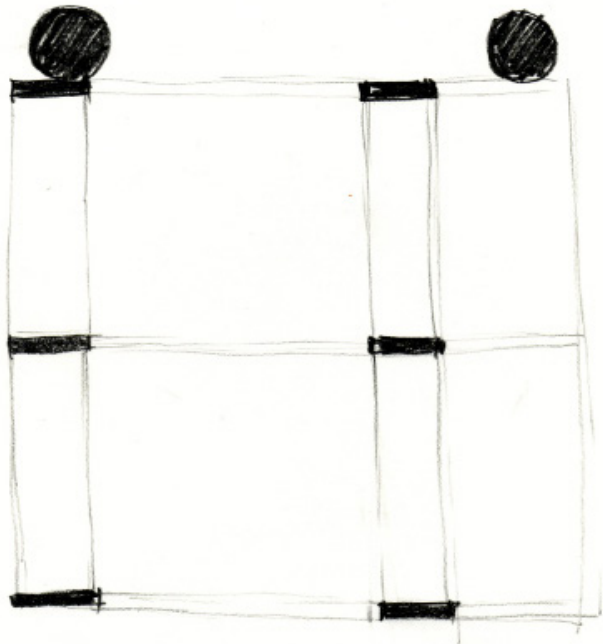
2114
2000-2013
Pastel and pencil on paper
21 x 29,7 cm



2115
2000-2013
Pastel and pencil on paper
21 x 29,7 cm



2116
2000-2013
Pencil on paper
21 x 29,7 cm

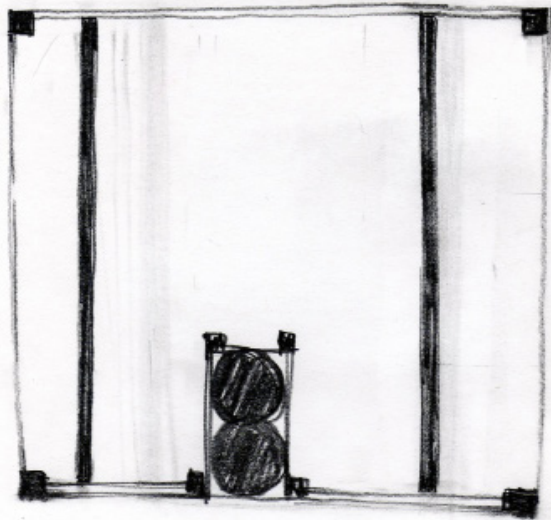


Nas'u

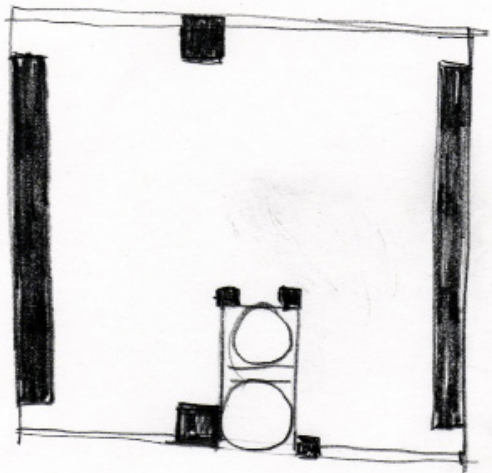
2124
2000-2013
Pastel on paper
21 x 29,7 cm



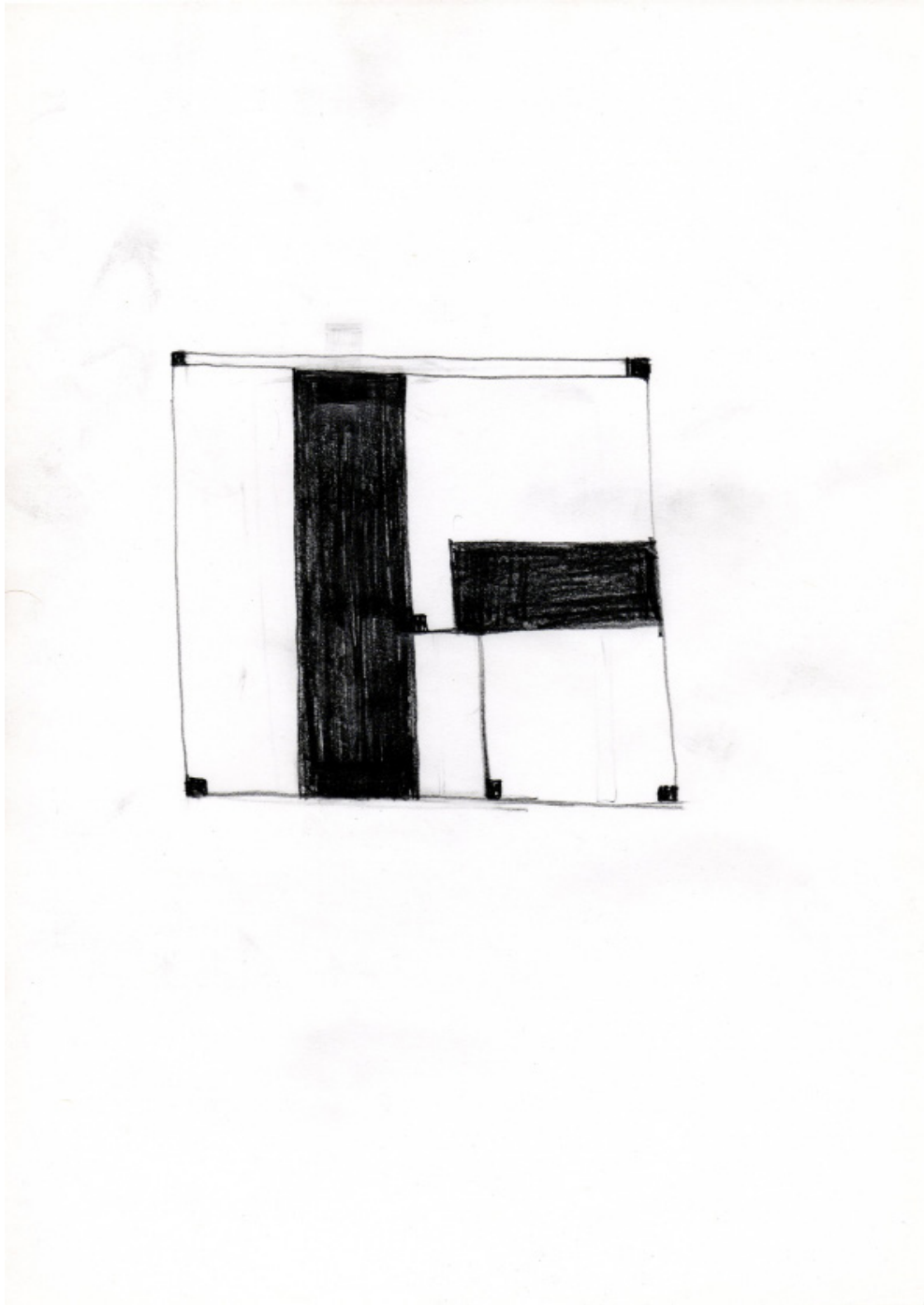
2194
2000-2013
Pastel on paper
10,5 x 14,7 cm



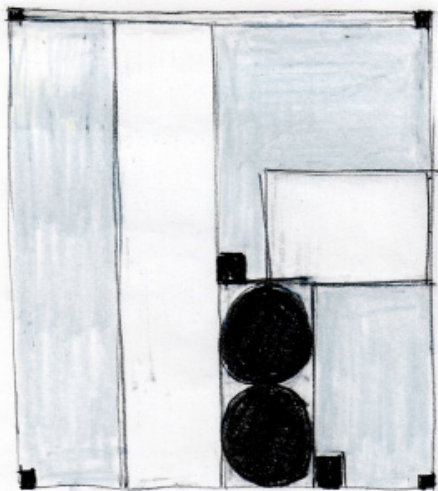
2195
2000-2013
Pastel on paper
21 x 29,7 cm



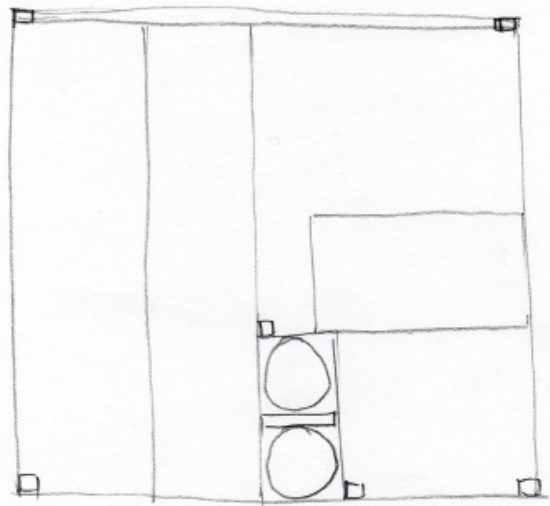
2196
2000-2013
Pastel on paper
21 x 29,7 cm



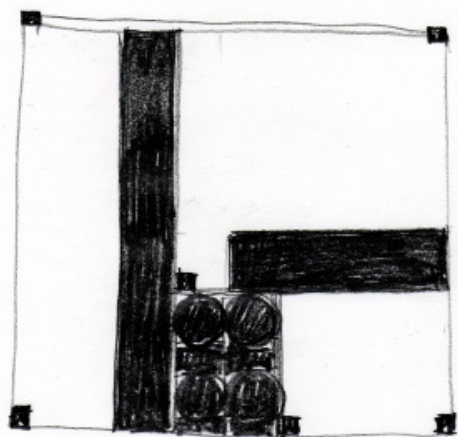
2201
2000-2013
Pastel on paper
21 x 29,7 cm



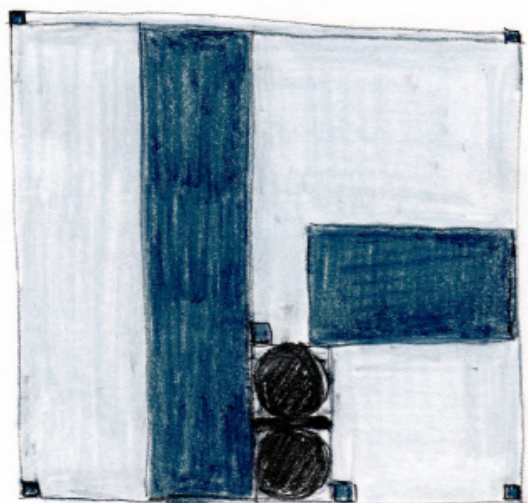
2202
2000-2013
Pastel on paper
21 x 29,7 cm



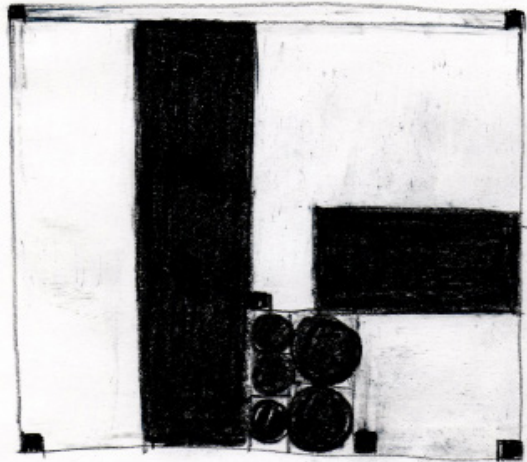
2204
2000-2013
Pencil on paper
21 x 29,7 cm



2205
2000-2013
Pastel on paper
21 x 29,7 cm



2207
2000-2013
Pastel on paper
21 x 29,7 cm



2208
2000-2013
Pastel on paper
21 x 29,7 cm

PETER MÄRKLI

Peter Märkli was born in 1953 in Zurich, where he later went on to study architecture at the ETH Zurich. His work has been influenced heavily by a trip he made to Saintonge in 1982, and more recently, by a tour he made of Palladio's country villas. In 2000, alongside his own studio, he began to build up an office in Albisrieden. Since 2002 he has been Professor of Design at the ETH Zurich.

Exhibitions

2012

- La Biennale di Venezia – 13. Mostra Internazionale di Architettura – common ground
- Gallery A4, Takenaka Cooperation, Tokyo

2008

- National Museum of Modern Art, Tokyo
- Architektur Galerie, Berlin

2006

- Architekturgalerie am Weissenhof, Stuttgart
- Architekturmuseum, Basel

2005

- Architektur Galerie, Berlin
- Kunsthalle, Vienna

2003

- Architekturgalerie, Hamburg

2002

- Architectural Association, School of Architecture, London
- Festspielhaus Hellerau, Dresden
- Königliche Kunsthalle, Copenhagen

2000

- Architekturmuseum Basel

1988

- Architekturforum Zurich

Awards

2012 Tageslicht – Award Ehrenpreis, Velux Stiftung

2002 Heinrich-Tessenow-Medaille

2001 Swedish Concrete Award

1997 Architekturpreis Beton

1995 Winner of the Neues Bauen in den Alpen with La Congiunta

Publication

- Ellis Woodman, 'Made to measure', BD London, 21.09.2012

- Samuel Penn, interview for the ae Foundation for Architecture + Education, January 2012

- Chantal Imoberdorf, Märkli – Professur an der ETH Zürich: Ausgewählte Bauten 2002–2012, publication accompanying an exhibition at Gallery A4, Tokyo 2012

- Gian-Marco Jenatsch, 'Das Grosse und das Ortsbezogene', in NZZ 26, 2012

- '...Dort sind wir eben wirklich unabhängig...', conversation between Peter Märkli and Andreas Tönnemann in ETH Zürich Trans magazine No. 19, October 2011

- Momoya Kaijima, Koki Tanaka, Kenjiro Hosaka (eds), Architectural Creation: Peter Märkli and Jun Aoki, 2008

- Exhibition catalogue (Tokyo: The National Museum of Modern Art, 2008)

- Nobuyuki Yoshida, 'Peter Märkli – Craft of Architecture', in a+u 01, 2008

- Florian Beigel + Philip Christou, 'Urban Figures – A Few Notes Towards the Idea of a More Figurative, 2007

- Architecture', in C3 11, 2007

- Astrid Stauer, 'Totale – Das Gebäude Fabrikstrasse 6 im Basler Novartis Campus' von Peter Märkli, in werk, bauen + wohnen 1–2, 2007

- Novartis Campus – Fabrikstrasse 6 / Peter Märkli (Basel: Schweizerisches Architekturmuseum/ Christoph Merian Verlag, 2006

- Martin Steinmann, 'Gelebte Räume, Notizen zur Schule im Birch', werk, bauen + wohnen 11, 2004

- Martin Tschanz, 'Weiterbauen an einer Modellschule', werk, bauen + wohnen 6, 2004

- Elizabeth Hatz, 'Arkitektur förbunden med alla tider, Arkitektur Schweiz', Igen 2, 2003

- Mohsen Mostafavi (ed), Approximations: The Architecture of Peter Märkli (London: AA Publications, 2002)

- André Bideau, 'Peter Märkli', entry in Carlo Olmo (ed), Dizionario di Architettura Contemporanea (Turin: UTET, 1997)

- Minimal Tradition, published by the Swiss Ministry of Culture to accompany the 19th Milan Triennale (Baden: Lars Müller, 1996)

- Christoph Mayr Fingerle (ed), Neues Bauen in den Alpen (Basel: Birkhäuser, 1996)

- Marcel Meili, review of La Congiunta in Rosamund Diamond and Wilfried Wang (eds), 9H, 9, 1995

- Die Stiftung La Congiunta (Stuttgart: Kunsthau Bregenz/Verlag Gerd Hatje, 1994)

- Marcel Meili, 'Die Arbeit der Augen/The Labour of the Eyes', in Du 5, 1992 and Skala 29, 1993

- Positionen IV: Peter Märkli, publication accompanying an exhibition at the Architekturforum Zurich (Zurich: Edition Thomas Boga, 1989)

- Hans Heinz Holz, 'Zur Öffentlichkeit von Kunst', in Archithese 4, 1984

- Heiny Widmer, 'Kunst am Bau – ein Thema für Kunstopportunisten?', in Kunstbulletin 5, 1984

Built projects

2012

- Extension of Cave Fin Bec winery, Pont-de-Morge

2011

- Headquarters building for Synthes, Zuchwil/Solothurn
- Renovation of Ungarbühlstrasse housing, Schaffhausen
- Master plan for Chantun Sur, Pontresina

2008

- Picassohaus office building, Basel
- House Schäpper-Blaas in Grabs

2007

- Apartment building for Hadersdorf model housing estate , Vienna

2006

- Visitor-Center, Fabrikstrasse 6, Novartis Campus Basel
- Residential and commercial building on Hohlstrasse 78, Zurich

2004

- Alteration of house Blaas in Städtli-Werdenberg
- Renovation of Basel Architecture Museum
- School 'Im Birch', Zurich-Oerlikon
- Alteration and extension of Sprenger apartment building in Schaan, Liechtenstein

2003

- Rebuilding of the organ in the Basel Cathedral
- Extension and renovation of a model school by Victor Hufnagel (1969–73), Wörgl, Austria

2002

- House in Triesenberg, Liechtenstein

2000

- House Märkli in Azmoos

1999

- House Eser in Hünenberg
- House Reith in Sevelen

1998

- Renovation of a multi-purpose hall in Frauenfeld

1997

- House Hürzeler in Erlenbach

1995

- House Gantenbein in Grabs
- Apartment building in Brig

1993

- Conversion of a farmhouse in Bad Ragaz

1992

- Conversion of hotel staff quarters into apartments, Walenstadtberg, 1992/99
- La Congiunta, a 'house' for a selection of sculptures by Hans Josephsohn, Giornico

1988

- Apartment building in Trübbach

1987

- House Wegmann in Winterthur-Seen

1886

- Apartment building in Sargans

1983

- House Hobi in Sargans

1982

- two Houses in Trübbach/Azmoos

Work in progress

- Gutstrasse housing, Zurich
- Project for 10 villas in Valadas, Portugal
- Renovation of façade, Bleicherweg office building, Zurich
- Renovation of façade, Dreikönigsstrasse office building, Zurich
- Weissacher House, Rumisberg/Solothurn
- School for the Hotel Industry, Belvoirpark, Zurich
- Palazin apartment building, Pontresina
- Hardturmpark housing, Interior of an apartment, Zurich
- Single-family house on Hochstrasse, Zurich
- Apartment building Green City, Zürich
- Rhy Tech quarters, transformation of an industrial district, Neuhausen

BETTS PROJECT

architecture gallery

1st Floor, 111-113 St. John Street

Clerkenwell, London EC1V 4JA

+44 (0)7909 070611

info@bettsproject.com

www.bettsproject.com