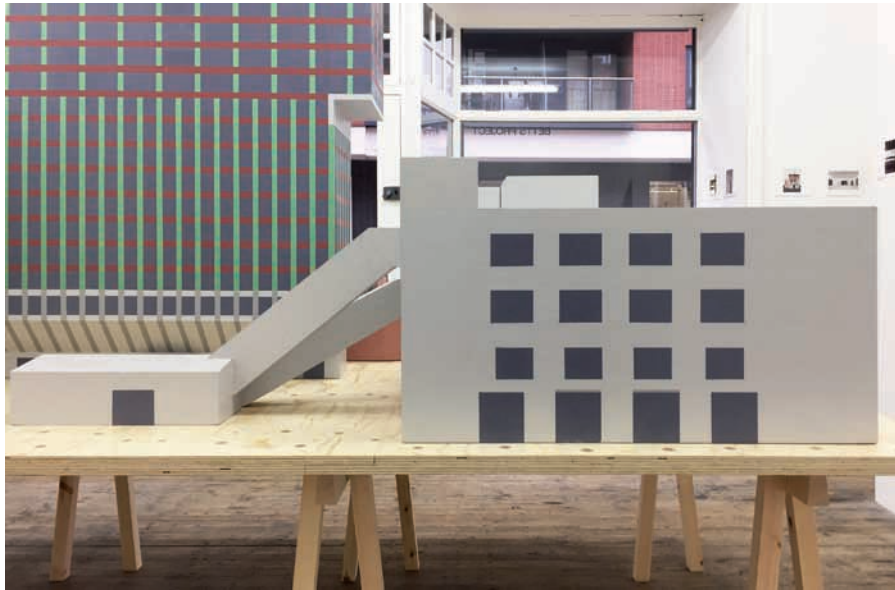


CARUSO ST JOHN *DIORAMA*

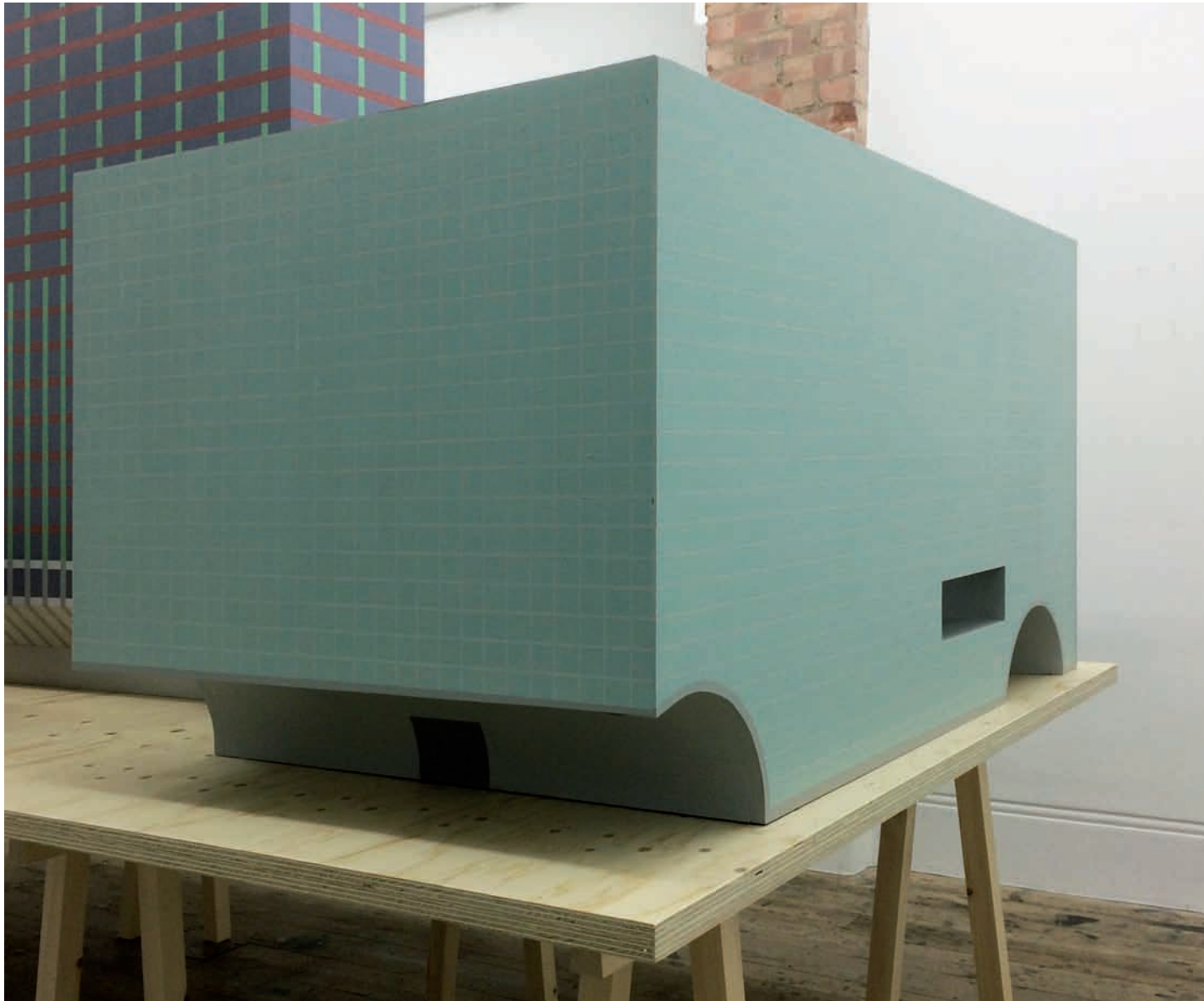
19 January – 25 February 2017
Preview: Wednesday, 18 January, 6–8 pm



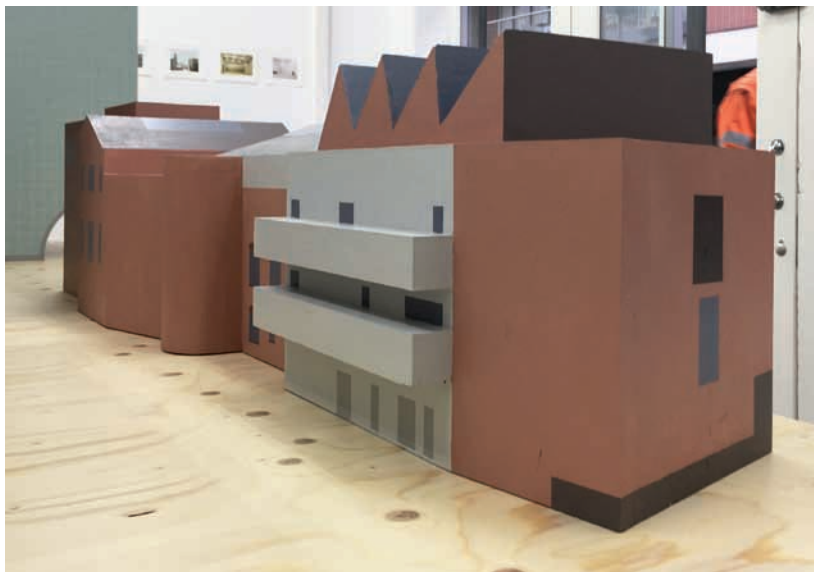
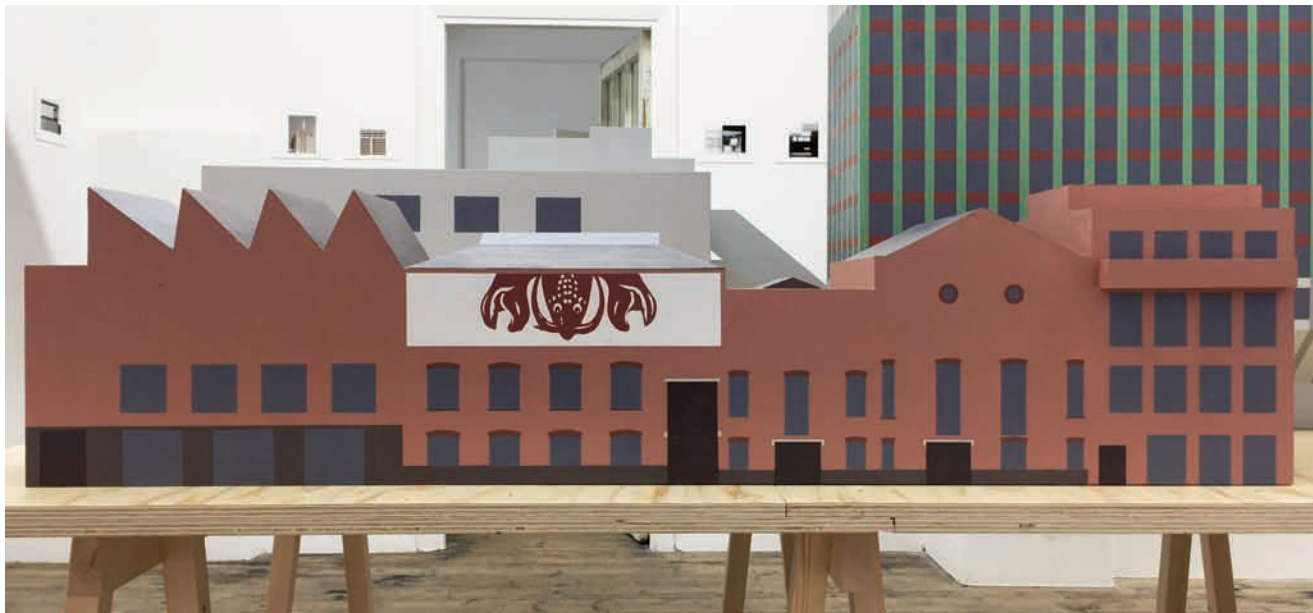
Oerlikon Tower, Zurich, 2013
Model in pine plywood
1.16 x 0.34 x 1.55 m
price on request



Pôle Museal, Lausanne, 2015
Model in pine plywood
1.77 x 0.88 x 0.53 m
price on request



Biomedical Centre, University of Basel, 2015
Model in pine plywood
1.52 x 0.87 x 0.75 m
price on request



Newport Street Gallery, London, 2004–2015
Model in pine plywood
1,6 x 0.38 x 0.36 m
price on request

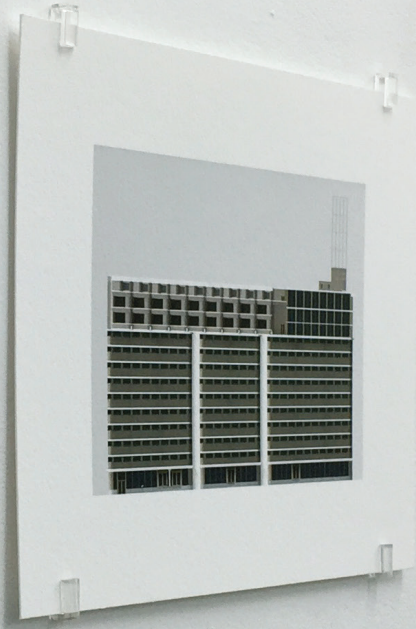
Model Photographs, 1991–2016

- 16.8 x 21 cm: each photograph is an edition of 7 – £60 (+ shipping from UK)
- 42 x 53 cm: edition of 3 on selected photographs – £650 (+ shipping from UK)

Giclée ink on Hahnemühle paper

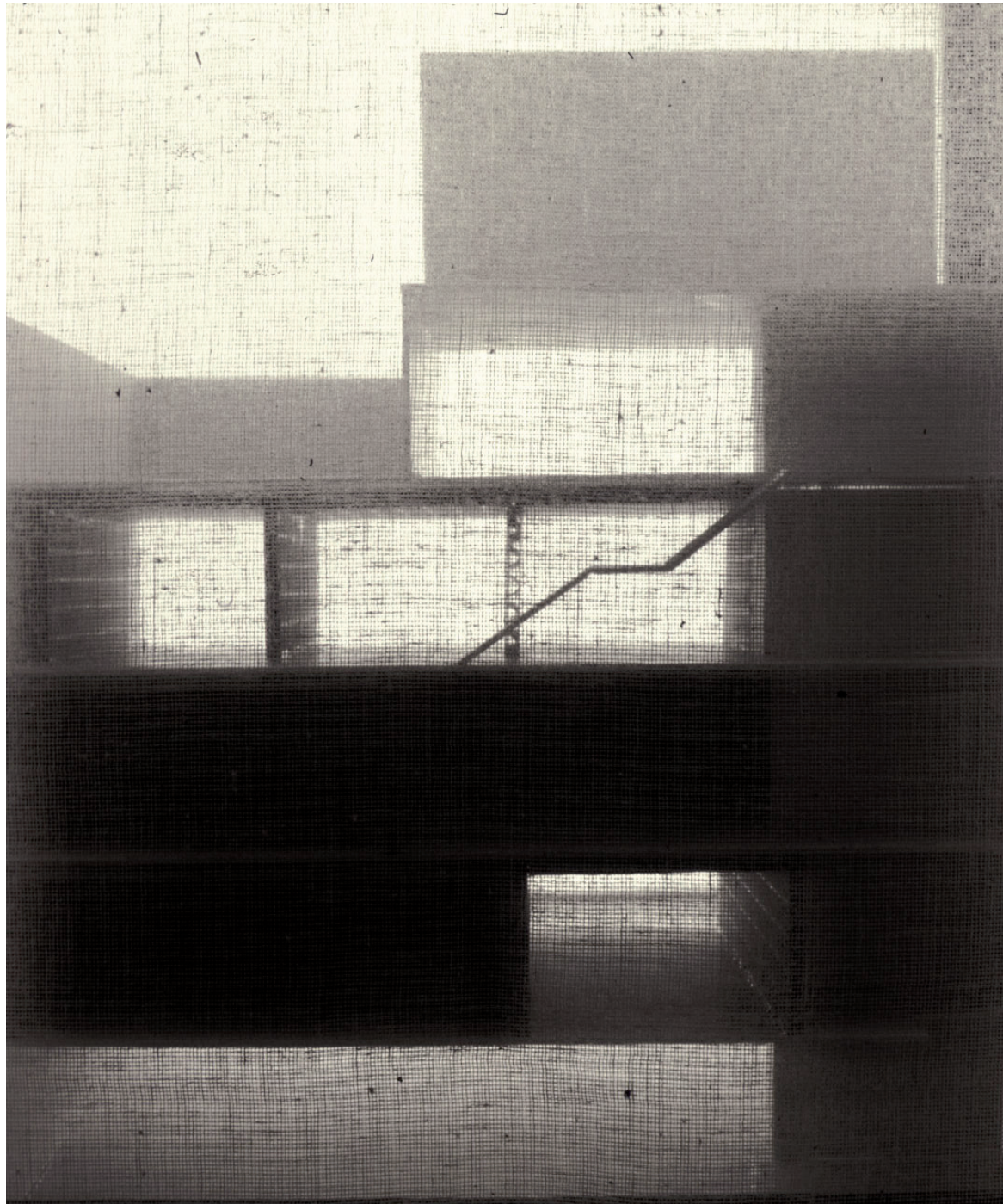
the prints are signed and numbered on the back by the architects

Betts Project is not VAT registered.





Another Glass House, 1991



New Art Gallery Walsall, 1995



Parasite, study for an exhibition, 2000



Sporttheatre (1), Arosa, 2000



Brick House (4), London, 2001–2005



Brick House (5), London, 2001–2005



Novartis Visitors' Centre and Offices (2), Basel, 2003



Novartis Visitors' Centre and Offices (3), Basel, 2003



Novartis Visitors' Centre and Offices (5), Basel, 2003



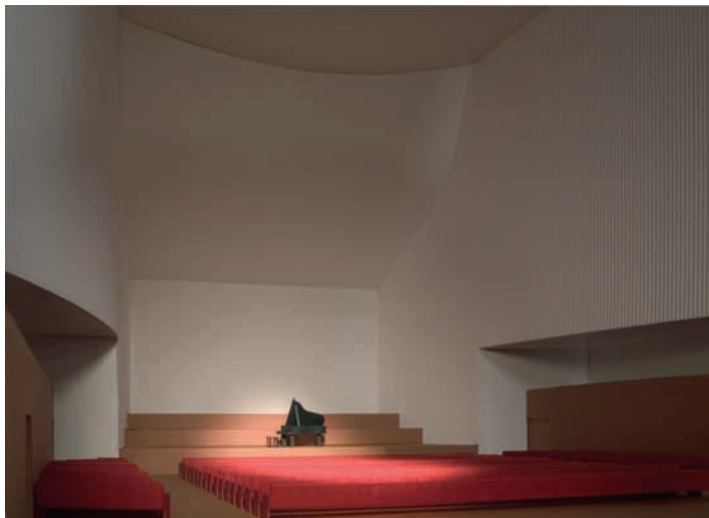
Novartis Visitors' Centre and Offices (6), Basel, 2003



Cultural and Tourist Centre (1), Ascona, 2004



Cultural and Tourist Centre (2), Ascona, 2004



Cultural and Tourist Centre (3), Ascona, 2004



Cultural and Tourist Centre (4), Ascona, 2004



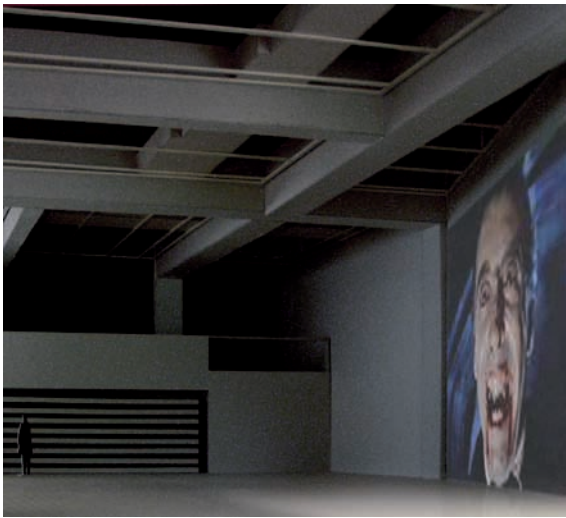
Cultural and Tourist Centre (8), Ascona, 2004



Nottingham Contemporary (4), 2004–2009



Nottingham Contemporary (5), 2004–2009



Nottingham Contemporary (7), 2004–2009



Newport Street Gallery (1), London, 2004–2015



Newport Street Gallery (2), London, 2004–2015



Newport Street Gallery (3), London, 2004–2015



Newport Street Gallery (4), London, 2004–2015



Hering Art Museum (2), 2005



Hering Art Museum (3), 2005



Hering Art Museum (5), 2005



Hering Art Museum (6), 2005



Herring Art Museum (7), 2005



Chichester Museum, 2006



Museo Diocesano, Milan (1), 2007



Museo Diocesano, Milan (2), 2007



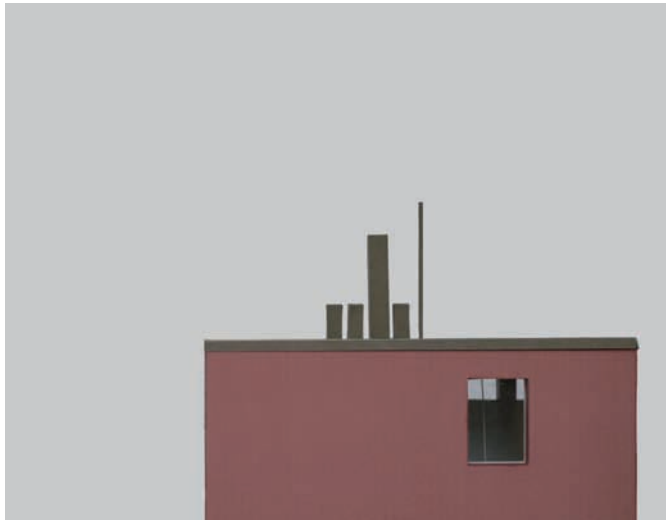
Museo Diocesano, Milan (3), 2007



Museo Diocesano, Milan (4), 2007



Museo Diocesano, Milan (5), 2007



Nagelhaus (1), Zürich, 2007-2010



Nagelhaus (3), Zürich, 2007-2010



Nagelhaus (4), Zürich, 2007-2010



Nagelhaus (5), Zürich, 2007-2010



Nagelhaus (6), Zürich, 2007-2010



Veemgebouw, Strijp S (1), Eindhoven, 2007-2010



Veemgebouw, Strijp S (2), Eindhoven, 2007-2010



Veemgebouw, Strijp S (3), Eindhoven, 2007-2010



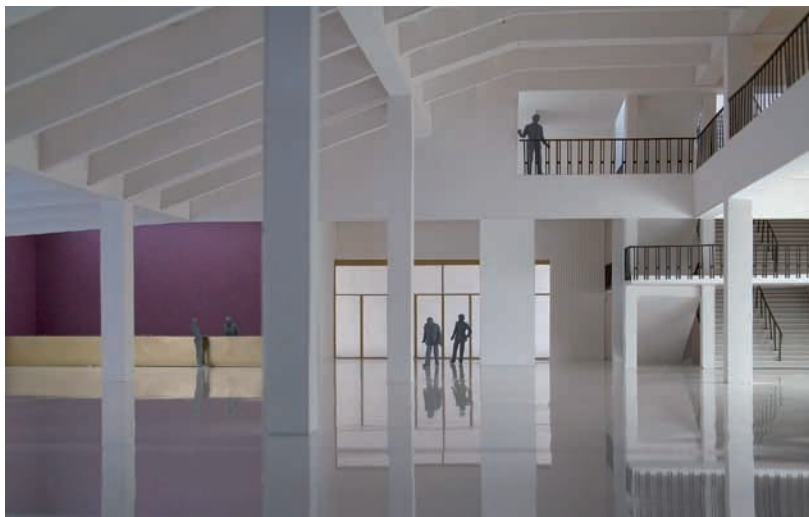
Veemgebouw, Strijp S (4), Eindhoven, 2007-2010



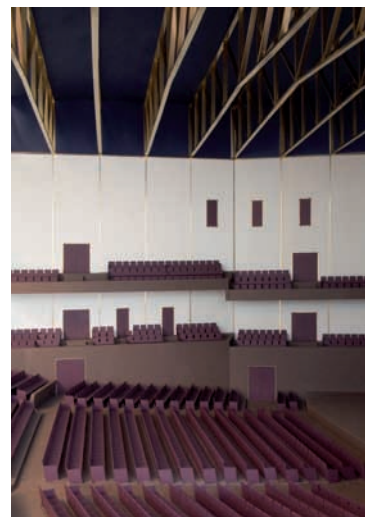
Veemgebouw, Strijp S (5), Eindhoven, 2007-2010



Veemgebouw, Strijp S (6), Eindhoven, 2007-2010



Koningin Elisabethzaal (1), Antwerp, 2010



Koningin Elisabethzaal (2), Antwerp, 2010



Koningin Elisabethzaal (3), Antwerp, 2010



Musée cantonal des Beaux-Arts (1), Lausanne, 2011



Musée cantonal des Beaux-Arts (3), Lausanne, 2011



Musée cantonal des Beaux-Arts (4), Lausanne, 2011



Musée cantonal des Beaux-Arts (5), Lausanne, 2011



Falconhoven Housing (2), Antwerp, 2014–2017



Falconhoven Housing (6), Antwerp, 2014–2017



Falconhoven Housing (7), Antwerp, 2014–2017



Campus di Mendrisio (1), 2015



Campus di Mendrisio (2), 2015



Campus di Mendrisio (3), 2015



Campus di Mendrisio (4), 2015



Latvian Museum of Contemporary Art (1), Riga, 2016



Latvian Museum of Contemporary Art (2), Riga, 2016



Latvian Museum of Contemporary Art (3), Riga, 2016

Betts Project is pleased to present *Diorama*, an exhibition of British architects **Caruso St John**.

'The models, and the photographs of the models are a way of getting closer and closer to an image that is already in our minds, it is about articulating all of the qualities in that image. I like the fact that in a competition one can try to communicate the concept and the atmosphere of a project in one or two such images. I would say that the preoccupation in the office is not the production of models, but of finding the image of a project.' – Adam Caruso, OASE 84 (2011).

The exhibition presents a selection of models for competitions as well as the model of their recent Stirling Prize winner project, the Newport Street Gallery. The 1:50 models in pastel colours belong to buildings the architects worked on during the last few years. Their focus lies on the exterior: The façades are flat, windows and doors are marked by coloured surfaces. Because of these details, the models have a strong pictorial quality, while at the same time their spatial dimension is underlined by thick layers of paint. Exhibited together on a large table, the models show a kind of imaginary Caruso St John-city. In Adam Caruso's words: 'The buildings that are represented in the models are very different, but we have used only five colours to represent all of their details. This serves to bring together their diverse forms and scales.'

The photographs on the wall offer insights into the interior of models Caruso St John have been making for the last 25 years. Thus they remind of the dioramas of the 19th century, three-dimensional models that show a situation in a way that looks real. Adam Caruso describes the nature of the model photographs as follows: 'They show a world where the atmosphere of our buildings are explicitly evoked at the same time as being uncanny as to the actual size and material of the models, models that have been only made to produce these images.'

In 1990 Peter St John and Adam Caruso established the practice Caruso St John. The two are interested in the emotional potential and physical qualities of construction. Art related projects by the practice include the New Art Gallery in Walsall, the Nottingham Contemporary Museum, various Gagosian Galleries, the reorganisation of Tate Britain and the Newport Street Gallery. For the latter Caruso St John won the renowned Stirling Prize in 2016. The interest of Caruso St John in art not only led to the building of museums but also to the designing of several exhibitions such as the show 'Defining Beauty' at the British Museum (2014–2015). The practice is based in London and in Zurich.

Exhibitions include the Gallery of Contemporary Art in České Budějovice (2016); the Venice Biennale (2012, 2004); Arkitekturmuseet in Stockholm (2010); gta Ausstellungen, ETH Zürich (2009); Department of Architecture and Spatial Design, London Metropolitan University (2008); The British School at Rome (2007); Architectural Association Gallery, London (2005); Architecture Foundation, London (2001, 1994, 1992).

BETTS PROJECT

100 Central Street

London EC1V 8AJ

+44 (0)20 7250 1512

hellobettsproject@gmail.com

www.bettsproject.com